



**ADMIRAL**  
**STAGING**











# CONTENTS

01 TRANSPORT	4
02 RIGGING	28
03 GRID SYSTEM	38
04 CABLE GUIDES	44
05 BUILD A RAMP	54
06 LIGHTING	60
07 TRUSS ACCESSORIES	64
08 CLAMPS & SAFETIES	76
09 TEXTILES	82
10 CABLES & CONNECTORS	90
11 OUR DISTRIBUTORS	98

# TRANSPORT

01

The Admiral Staging range includes numerous transport solutions for a wide variety of applications. With our modular transport system you can build your own transport cart step-by-step, choosing the desired parts, heights and lengths that best suit your needs. This modular system allows you to design a cart to transport fixtures, ballet floors, cables or even a storage space for your tools and essentials. Do you need strong and sturdy equipment for transporting truss, baseplates or stage decks? Our Strong Family of truss dollies includes options suitable for both straight or circular 30- and 40-truss. Our baseplates and stage decks transporters are ergonomically designed to load and unload your equipment in a safe way.



## 01 TRANSPORT

MODULAR TRANSPORT	7
MEATRACK	8
CABLE CART	10
STORAGE CART	12
BALLETFLOOR CART	14
BASEPLATE DOLLY	16
SIDELIGHT TOWER	18
STRONG BOY®	20
STRONG BOY MINI®	21
STRONG GIRL	23
STAGEDECK DOLLY	25
LIFTING WHEEL	26









Location:  
Royal Opera House - London, UK





Location:  
Wilminktheater Theater - Enschede, NL

# MODULAR TRANSPORT

# MEATRACK

Use our modular transport system to design your ideal Meatrack for transporting and storing fixtures like moving heads, lighting bars or single luminaires. Combine length profiles and fork-side panels of various sizes to build the Meatrack frame. Your cart can have a height of 110 cm, 183 cm or 203 cm, and a width of either 60 cm or 80 cm (only available for the two larger heights). Choose the 183 cm height for easy transport in a van or through low doorways without compromising storage space. When transporting larger fixtures, you can hang them in the middle of the cart using a side panel with a center bracket. Panels are available with the bracket pre-installed, or you can add the bracket separately to a panel without one. Depending on the size and number of your fixtures, choose either aluminum or steel hanging tubes to create the desired storage space.





# BUILD A MEATRACK STEP BY STEP



## CHOOSE SIDE PANELS

Depending on the size and weight of the fixtures you need to store and transport, you can choose side panels with heights of 110 cm, 183 cm or 203 cm, and widths of either 60 cm or 80 cm. Pre-drilled holes in the side panels allow you to hang tubes in the Meatrack frame at

different heights, allowing you to use the space in your cart as efficiently as possible.

Adding a centre bracket provides you with more hanging options for your fixtures. These centre brackets are mounted in the fork-side panels and

allow you to hang larger fixtures in the centre of the Meatrack.

### Heights/ widths:

- 110 cm - 60 cm wide
- 183 cm - 60 or 80 cm wide
- 203 cm - 60 or 80 cm wide



## CHOOSE LENGTH PROFILES

Length profiles are available in sets of 4 profiles with a length of 80 cm, 160 cm, 180 cm and 210 cm. Together with the fork-side panels, these create the frame for your Meatrack.

While choosing the length profiles, you

need to take the total weight of your Meatrack into consideration. If you want to store heavy fixtures, we recommend creating a compact frame, using higher fork-side panels in combination with shorter length profiles.

### Length profiles:

- 80 cm
- 160 cm
- 180 cm
- 210 cm



## CHOOSE CASTORS

After selecting the preferred fork-side panels and length profiles, it's time to choose the type of castors you want to mount under your cart. The Admiral castors are perfect for this job as they don't leave any marks on soft surfaces such as gym floors or dance halls. For this cart, we recommend using swivel castors, with a diameter of 100 mm or 125 mm.

- 100 mm castors make the cart easy to move, while keeping its height low enough to pass under smaller doorways and tight spaces
  - 125 mm castors are perfect for moving the cart over uneven surfaces
- We have created castor sets, each set including four castors with and without brake.

### Castor sets:

- 100 mm castor, load capacity of 160 kg per castor
- 125 mm castor, load capacity of 200 kg per castor



## CHOOSE HANGING TUBES

Depending on the amount and size of the fixtures you want to store in the Meatrack, you choose hanging tubes with the same length as your frame. Hanging tubes come in different lengths and

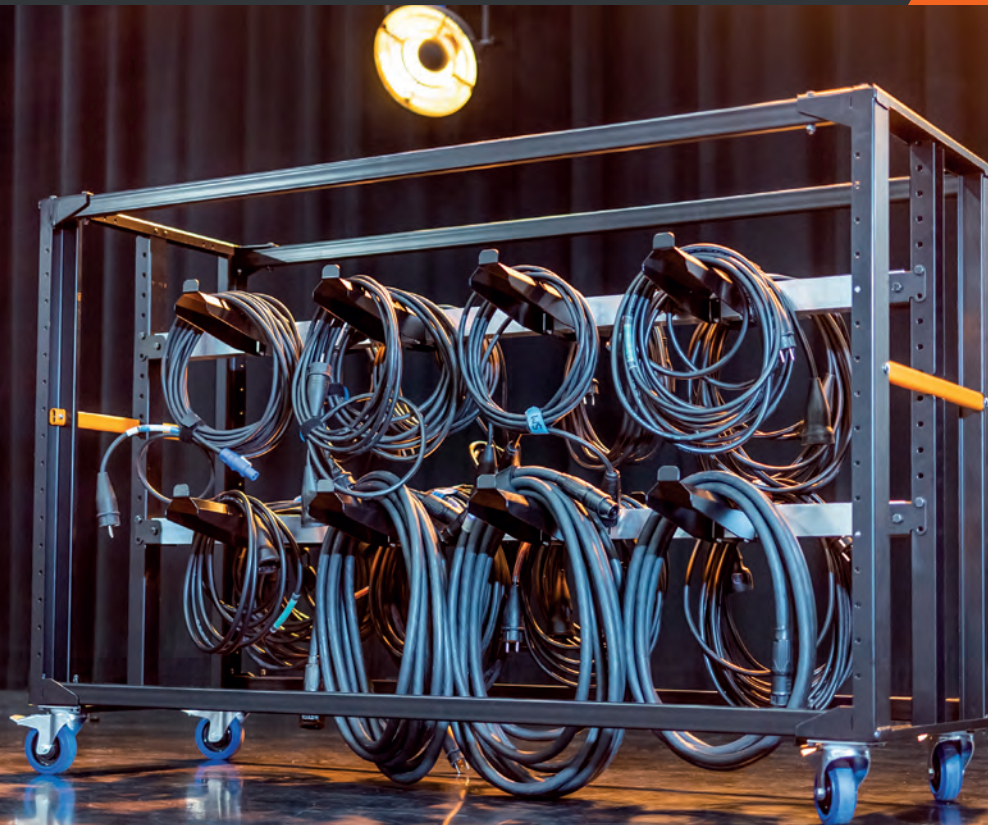
are made of either steel or aluminium. Each tube comes with a fork set, which includes all the necessary parts to hang the tubes in your Meatrack.

### Hanging tubes:

- length 80 cm Ø 50mm, aluminium
- length 160 cm Ø 50mm, aluminium
- length 180 cm Ø 50mm, aluminium
- length 210 cm Ø 48mm, steel

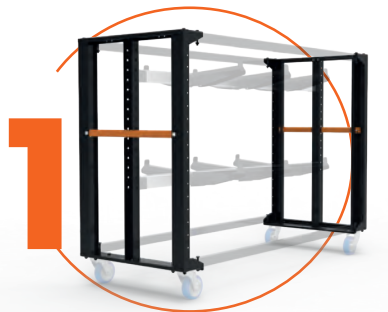
# CABLE CART

Our Cable Cart is more than just a regular cable organizer, it's a 2-in-1 solution designed to store and move your cables easily. You no longer have to go back and forth to the storage room for another cable or search through boxes and buckets to find the right one. This cart can be easily rolled on stage to help you set up quickly. It keeps your cables neat and organized, so you can find and rotate through the cables you need with ease. Using Slim-line panels from our modular system, you can design the cart in three heights: 110 cm, 183 cm and 203 cm, with various lengths. The orange handles make it easy to move the cart and lift it over small obstacles. Strong cable forks are placed on support profiles to provide space for hanging cables, helping protect your equipment and extend its life.





# BUILD A CABLE CART STEP BY STEP



## CHOOSE SIDE PANELS

Choose the desired height depending on the amount of cables you need to store in your Cable cart. This cart is available in multiple heights, using our slim-line panels with centre brackets. These centre brackets allow you to hang cables on each side of the support

profiles, providing you with as much hanging space as possible. Our slim-line panels are equipped with orange handles for your convenience while moving around your Cable cart.

### Heights:

- 110 cm
- 183 cm
- 203 cm



## CHOOSE LENGTH AND SUPPORT PROFILES

Our length profiles are available in sets of 4 and, together with the slim-line panels, create the frame of your Cable cart. While choosing the length profiles, the total weight of your cart needs to be taken into consideration. If you want to store a lot of heavy duty cables, we recommend creating a compact frame.

The support profiles are the tubes on which cable forks are mounted. When selecting the support profiles, we advise double-checking to ensure they are the same size as the chosen length profiles. Every support profile comes with a fork set for mounting it on the centre brackets of the side panels.

### Length and support profiles:

- 80 cm
- 160 cm
- 210 cm



## CHOOSE CASTORS

Once you've assembled the frame of your Cable Cart, the next step is to pick the right castors. We recommend swivel castors with a diameter of 100 mm or 125 mm. These castors come in sets of four, with options with and without

breaks. They are designed to be safe on fragile surfaces, such as gym floors or dance halls, without causing any damage. Make sure you select castors that can support the weight of the cables you plan to hang on the cart.

### Castor sets:

- 100 mm castor, load capacity of 160 kg per castor
- 125 mm castor, load capacity of 200 kg per castor



## CHOOSE CABLE FORKS

Our black aluminum cable forks are the parts on which you hang your cables. With a length of 55 cm, they provide enough hanging space on both sides of the cart, allowing you to neatly organize

your cables. Choose the amount of cable forks depending on the type and number of cables you want to store in your Cable cart. Each cable fork comes with a screw set to mount the forks on

the cable support profiles.

The cable forks have a maximum load of 50 kg per fork (25 kg per side).

# STORAGE CART

Build your perfect storage solution with our modular Storage Cart. The system allows you to create a transport cart in three heights: 110 cm, 183 cm or 203 cm. You can choose from six different crate sizes to customize the cart's interior, giving you the freedom to organize tools, supplies and other essentials however you want. The crates slide easily in and out from either side, and because they are designed to be slightly raised before pulling them out, they won't accidentally slide out when you're moving the cart around. With sturdy castors and a strong frame, this cart is ideal for both storing and transporting your items.



Location:  
Austria Center Vienna - Vienna, AT



# BUILD A STORAGE CART STEP BY STEP



## CHOOSE FRAME HEIGHT

We offer three frame sets, all finished with a top lid to prevent dust and dirt from falling in the top crate. Made of hard plastic, the lid offers improved scratch resistance.

Its screws sink in, which makes the surface of the top lid completely flat with nothing sticking out. This allows additional equipment to be easily and securely stacked on top.

### Heights:

- 110 cm
- 183 cm
- 203 cm



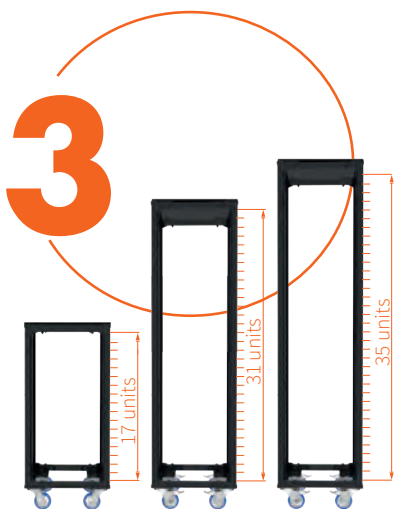
## CHOOSE CASTORS

Our blue castors fit perfectly under our Storage carts as they don't leave any marks on soft surfaces. We suggest using either our 100 mm or 125 mm swivel castors, depending on the weight you intend to store in your Storage cart.

We have several castor sets, each set including four castors with and without a brake. Based on the type of supplies you want to store in the Storage cart, you choose castors with the appropriate load capacity.

### Castor sets:

- 100 mm castor, load capacity of 160 kg per castor
- 125 mm castor, load capacity of 200 kg per castor

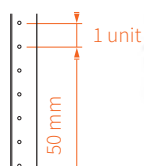


## CHOOSE STORAGE CRATE SETS

To complete your Storage cart, we offer a variety of durable storage crates. With a fixed size of 60 cm x 40 cm (L x W) and various height options, you can be as flexible as you want when customizing your Storage cart. Every crate comes with drawer profiles which can be mounted in the slim-line panel with two

M6 bolts. To determine the number of crates that can fit in your Storage cart, we have created a Unit chart. Always start calculating the units from the bottom of the cart up. Below you can see our selection of crates, each with an indication of how many units they will take up in the Storage cart's frame.

If you want to be able to stack more in one crate, please keep in mind to calculate 1 extra unit per crate. Simply add crates until you have reached the maximum amount of units that fit your frame.



2 units



3 units



4 units



5 units



6 units

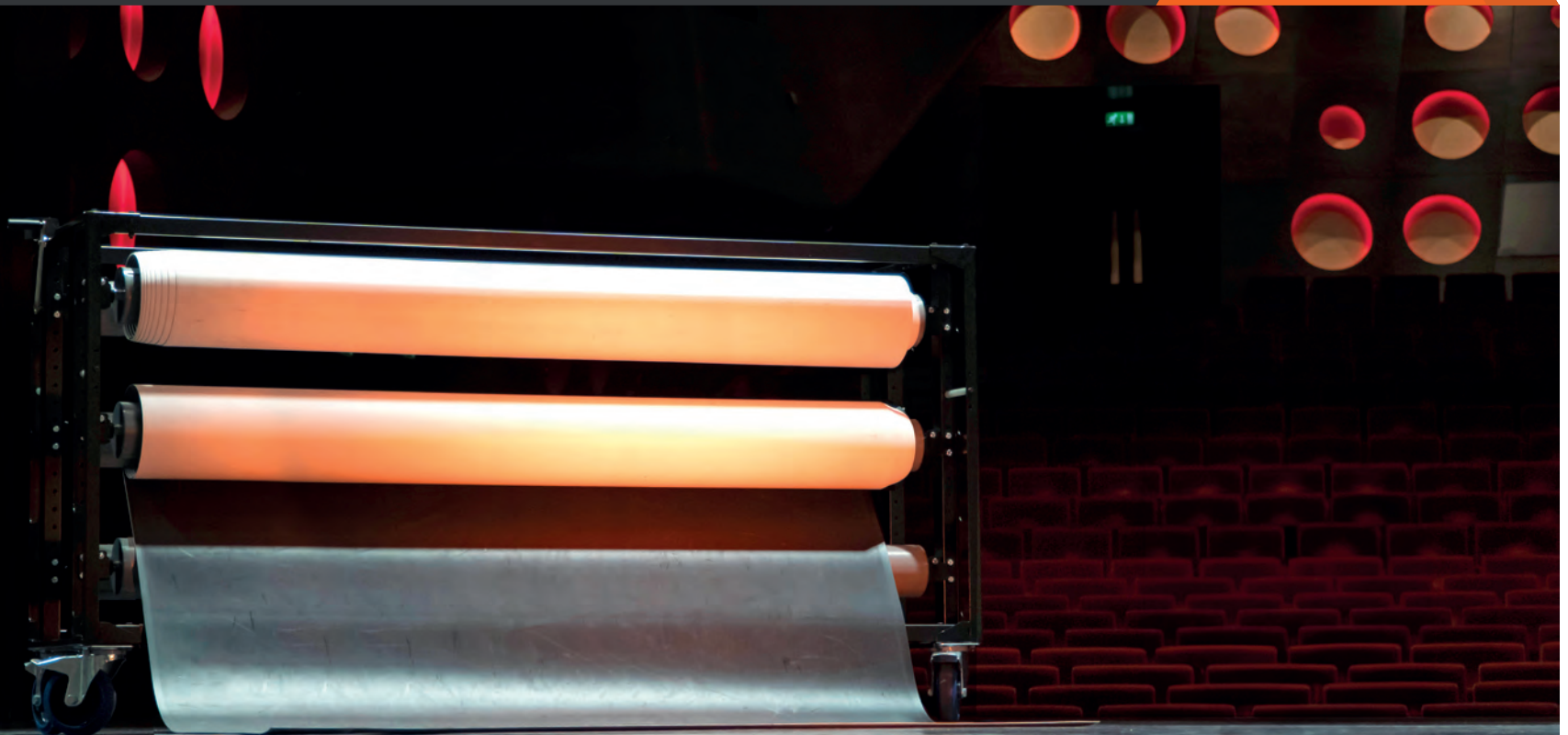


7 units

# BALLETFLOOR CART

Whether you need to store or transport your stage and dance floors, our Balletfloor cart is designed to help you do it efficiently and reliably. Simply roll your floor onto one of the six plastic tubes mounted in the cart's frame using the foldable handle.

The cart comes in three sizes, suitable for floor widths of up to 150 cm, 180 cm and 200 cm. Depending on the thickness of your floor, each tube can hold either 25 or 30 meters of flooring. These sturdy tubes also ensure your floor is being held in a proper shape, maintaining its longevity and preventing it from being flattened and potentially damaged.





# BUILD A BALLET FLOOR CART STEP BY STEP



## CHOOSE FRAME LENGTH

You can choose from three different frame sets when designing your Balletfloor cart. These frames have a standard height of 110 cm and come in lengths of 180 cm, 210 cm and 230 cm.

Select the frame length that best suits the width of your stage or dance floors.

### Floor width :

- up to 150 cm: choose the 180 cm frame
- up to 180 cm: choose the 210 cm frame
- up to 200 cm: choose the 230 cm frame



Six sturdy plastic tubes are placed in the base of this cart. Each tube has a metal strip to line up the ballet floor. The tubes are rotated with a handle, which can be easily folded between the

side panels after use. The thickness of your ballet or stage floor determines how many meters of floor you can roll on each tube:

### Material thickness:

- 1.6 mm: max. 30 meter floor
- 2 mm: max. 25 meter floor



## CHOOSE CASTORS

Once you've built the frame for your Balletfloor cart, the next step is to choose the castors. Our blue Admiral castors are ideal, as they won't leave marks on soft surfaces like gym floors or dance halls.

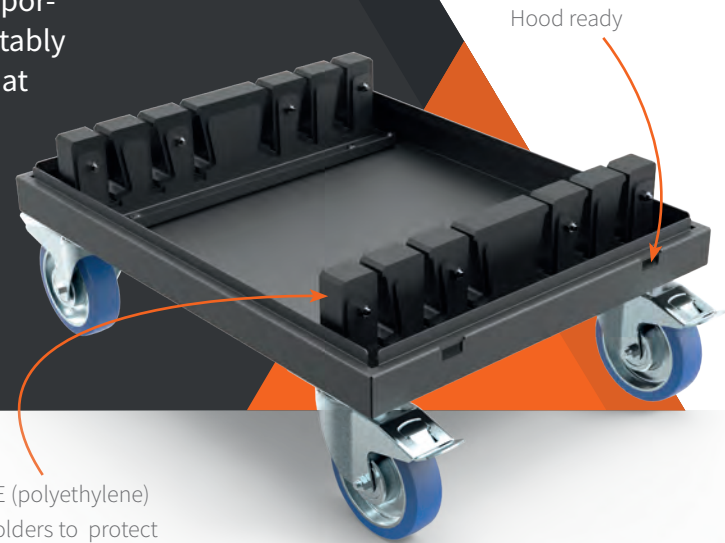
We suggest using 160 mm castors, each with a 300 kg load capacity, to support the full weight of the Balletfloor cart. Make sure to use at least 2 castors with brakes.

### Castor sets:

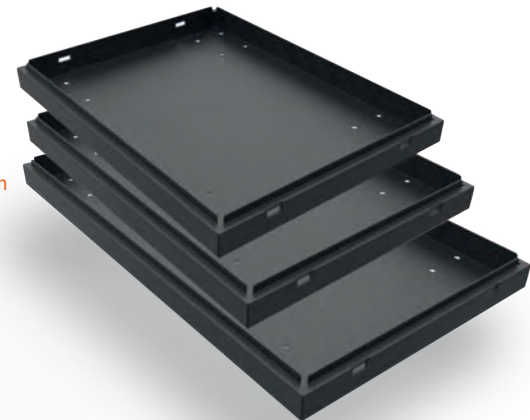
- 160 mm castor, load capacity of 300 kg per castor

# BASEPLATE DOLLY

Our Baseplate dolly 2.0 is an ergonomic and customizable baseplate transporter. Thanks to its PE holders equipped with guide profiles, you can comfortably place baseplates onto the dolly, only moving them into a vertical position at the last moment. These holders also protect the baseplates from getting scratched when loading them on and off. Sturdy 160 mm castors ensure a smooth ride over bumps and uneven surfaces. The Baseplate dolly can be topped with a flightcase hood, making it easy to stack other items on top.



73 cm  
80 cm  
100 cm





# BUILD A BASEPLATE DOLLY STEP BY STEP

1



## CHOOSE FRAME

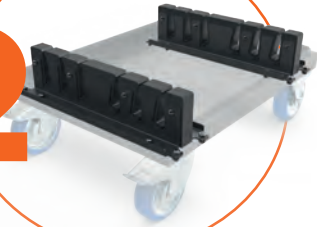
To build a Baseplate dolly that fits the dimensions of your baseplates, you have to choose one of the three available frame sizes: frame 73, 80 or 100. Each frame has pre-drilled holes for

mounting the castors and has been made “hood ready” with four cutouts for the butterfly locks of an optional flightcase cover.

### Frame sizes:

- Dolly frame 73: 77 cm x 59 cm (L x W)
- Dolly frame 80: 84 cm x 59 cm (L x W)
- Dolly frame 100: 104 cm x 59 cm (L x W)

2



## CHOOSE HOLDERS

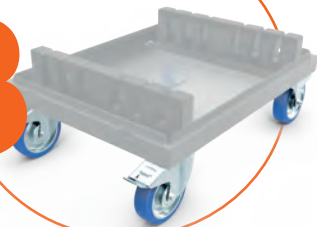
Our PE holders are the key to our ergonomically designed Baseplate dolly. The holders are equipped with a guide profile which allows you to comfortably place the plates onto the dolly, only moving into a vertical position at the

last moment. The plates will slide easily into their designated place and when they reach a vertical position, they are safely and stably stored. Three types of baseplate holders are available, each set containing two holders.

### Holder sets:

- 6 mm for 6 x 6 mm baseplates
- 8 mm for 6 x 8 mm baseplates
- 10 mm for 4 x 10 mm baseplates

3



## CHOOSE CASTORS

Adding castors is the final step when building your own Baseplate dolly. Our blue castors do not leave any marks on ballet floors or other soft surfaces.

To bear the weight of a fully loaded Baseplate dolly, use 160 mm castors with brakes, with a load capacity of 300 kg each.

### Castor sets:

- 160 mm castor, load capacity of 300 kg per castor



# SIDELIGHT TOWER

Mount your fixtures in our towers, transport them to the location, push the ladder up by hand and use them as a Sidelight tower on stage! Sidelight towers can be equipped with moving heads, theatre luminaires and other lighting fixtures. The tower can reach a total height of 300 cm by pulling the ladder up.

The position of the ladder can be symmetrical or asymmetrical, depending on the type of fixtures you want to use. The symmetrical Sidelight tower can be used for smaller fixtures such as LED par spotlights, small moving heads, blinders and strobes. The asymmetrical Sidelight tower is suitable for fixtures that demand additional space in front of the ladder for optimal positioning and aiming, such as profile spots.



Location:  
YKKE concert - Tour '24, DE



There is a welded frame inside the Sidelight tower. Two separate hangers are also provided, so they can be installed in the middle of the frame to create the telescopic ladder.



The ladder is equipped with roller wheels that allow it to slide easier. The wheels are adjustable, so the slack of the ladder in the Sidelight tower can be eliminated.



A cord with handles on both sides helps you lift the ladder up before inserting the locking pin to secure it in place.

When the ladder is lifted up, two extra tubes can be mounted in the bottom side of the Sidelight tower to create shinlights. These tube are mounted on the outer frame of the tower.

Always use the Sidelight tower with two people to safely operate it. The ladder can be loaded up to 40 kg and lifted up to a maximum of 100 cm. When the ladder is already secured, it can be loaded up to 100 kg.



Always use  
with 2 people



40 kg  
while lifting

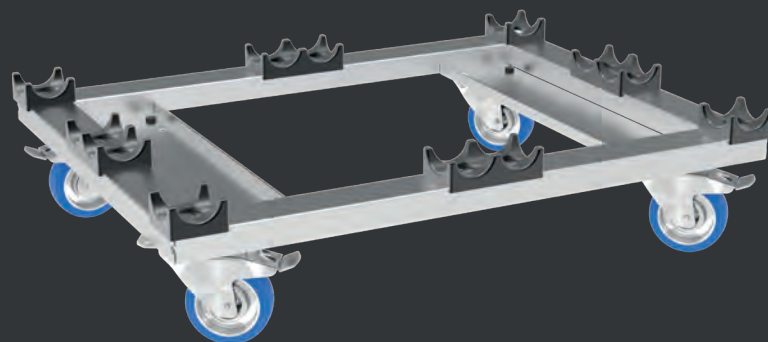


100 kg  
while secured



# STRONG BOY®

Our Strong Boy is a strong cart! Suitable for both 30 and 40 truss, the Strong Boy is the perfect solution for transporting straight truss securely and effortlessly. The cart has a sturdy base made of strong 2 and 3 mm steel and it's equipped with rubber studs for an optimal friction of your truss. Hooks can be attached on each side of the dolly to secure the load.



Hook profile for straps



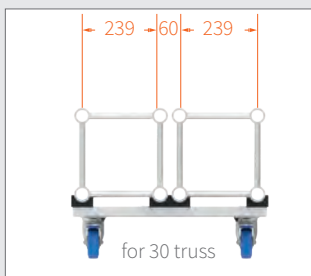
Stackable



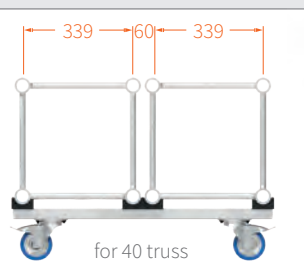
Storage space for carriers 30 truss



Use our truss carriers (page 69)



for 30 truss



for 40 truss

Centre-to-centre distance



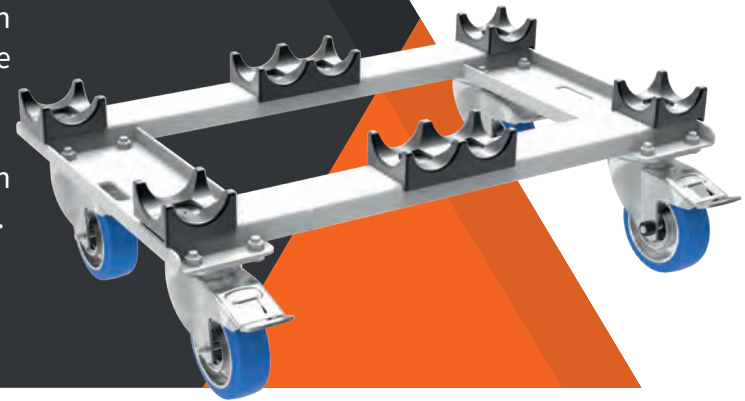
Compatible with all Prolyte, Eurotruss, Global Truss, LITEC, NEXT Truss, with a centre-to-centre distance of 239 mm (30 truss) and 339 mm (40 truss)



# STRONG BOY MINI<sup>®</sup>

This lighter and smaller version of the Strong Boy will come in handy in many situations. When loading the Strong Boy with truss, use it together with its mini version so you can ride the loaded dolly up a ramp without any difficulties.

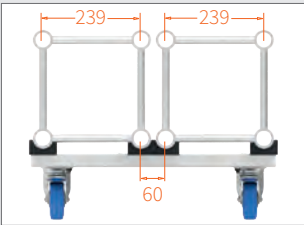
Besides using it in combination with the Strong Boy, you can also use two mini dollies at the same time to transport 30 truss.



Compact design



Hook profile for straps



Centre-to-centre distance



Use our truss carriers (page 69)



Use the Strong Boy mini to ride your truss up a ramp



Compatible with all Prolyte, Eurotruss, Global Truss, LITEC, NEXT Truss, with a centre-to-centre distance of 239 mm (30 truss)







# STRONG GIRL

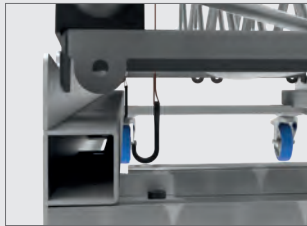
Our Strong Girl is designed for transporting circular trusses with a square cross section and an outer diameter from 2.5 m up to an infinite diameter. Its frame is made of 3 mm zinc-plated steel and it is equipped with cutouts for attaching the hooks of your straps, so your load can be secured. The frame of the dolly is equipped with rubber studs which ensure an optimal positioning of your truss. Two versions are available, one for 30 truss and one for 40 truss.



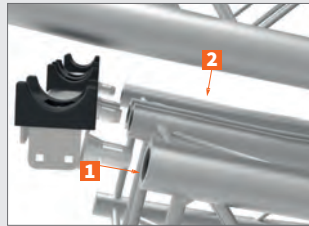
For every radius



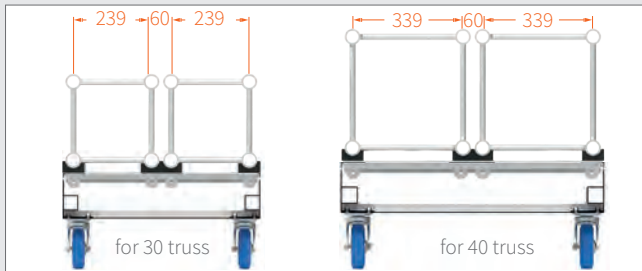
Rubber studs prevent slipping



Hook profile for straps



To stack, assemble the carriers with a conical coupler to the truss



Centre-to-centre distance



Use our truss carriers (page 69)

Compatible with all Prolyte, Eurotruss, Global Truss, LITEC, NEXT Truss, with a centre-to-centre distance of 239 mm (30 truss) and 339 mm (40 truss)





# STAGEDECK DOLLY

Cost-effective and a time saver, our Stagedeck dolly allows you to efficiently transport up to six stage decks at once. Due to its ergonomic design, the stage elements can be easily slid into place, thus preventing excess pressure on your back while loading the cart.

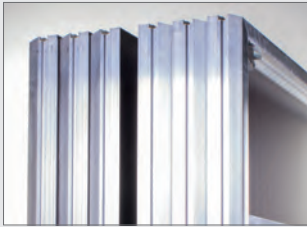
The Stagedeck dolly comes in two versions, suitable for 1 x 1 meter decks and 1 x 2 meter decks respectively.



Ergonomic design



Two safety measures

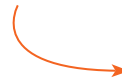


Transports up to 6 decks



For 1 x 1 and 1 x 2 m decks

Compatible with:  
Prolyte, Sixty82,  
Bütec ECO1  
NEXT Truss



# LIFTING WHEEL

With a maximum load of 130 kg, our multifunctional Lifting wheel enables you to move your stage decks, truss parts and other décor pieces smoothly. The wheel comes equipped with an 80 mm castor that can move 27 mm up and down. When lowered, the lifting wheel can handle the maximum load of your stage deck.



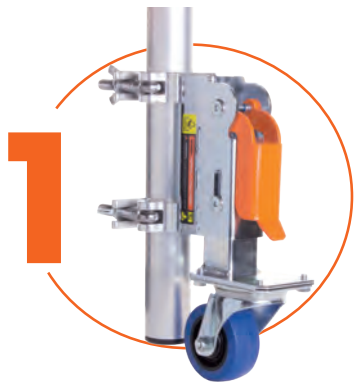
**NOTE** The Lifting wheel is only meant for moving a stage. It should be lifted off the ground before using the maximum load of the stage decks.



130 kg

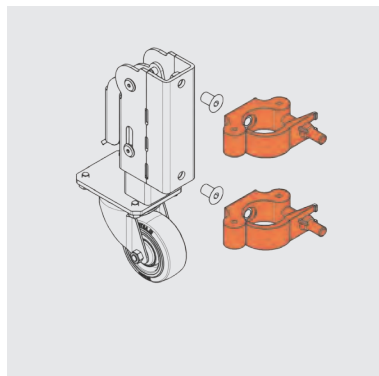


# 3 WAYS TO USE



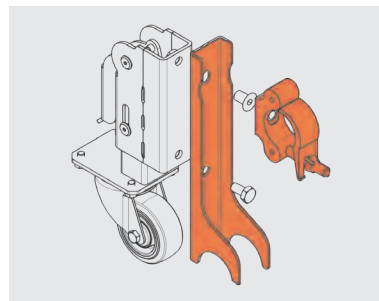
## STAGE RISER

Mount the Lifting wheel directly on square stage legs or use half couplers to mount it on round stage legs. In addition to that, it is even possible to mount it to two round legs using the mounting plate for the Lifting wheel. When no additional movement is required, lift the wheel off the floor and you can use the maximum load of your stage.



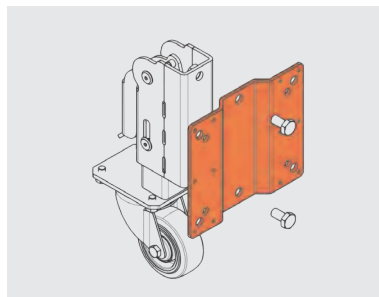
## TRUSS MOVER

Mount the Lifting wheel on your truss frame, such as a DJ booth, with a truss attachment and roll it easily on and off stage.



## BOX RISER

Wooden boxes or other types of décor pieces can also be quickly moved around by attaching the wheel with a mounting plate attachment.



# RIGGING

When it comes to rigging your show equipment, you need options that offer both versatility and security. That's where our range of rigging options comes in.

With our solutions, you have the flexibility to construct your setup in any way you see fit. Whether you need to suspend your equipment or build a standing structure, assemble a simple or more complex setup, our products offer the versatility you need to make it happen.

# 02



## 02 RIGGING

FREEDOM MODULAR RIGGING	30
SINGLE RIGGER	32
DOWN RIGGER	33
DROP ARM	34
FLOOR RACK	35
LOW HANGER TUBE	36
MONO STAND®	37





# FREEDOM MODULAR RIGGING

One of the most versatile products in our range is the Freedom system. This modular rigging system removes any traditional constraints and allows you to easily build your light show either suspended or standing, with different length and width variations. What's more, you can rig any kind of luminaire, from pars and spots to moving heads.

Get creative and combine the components of this system to set up Single riggers, Down riggers, Drop arms or Floor racks in your ideal construction.

## BASIC PARTS FREEDOM

The Freedom system consists of several basic components that can be combined in numerous configurations. By connecting profiles with each other using the coupler set, the height can be easily adjusted, while the width can be customised by using different lengths of hanging tubes.



## SAFETY SET

Always use the Freedom safety set to attach a secondary safety device, such as a safety cable, to ensure a secure connection between your system and the supporting structure.





### NUT PLATE SET

To attach a clamp or coupler to a length profile, a nut plate set is used. For the Single rigger, two sets of nut plates are connected at the top and bottom of the profile. For the Down rigger setup, two nut plate sets are attached at the top of the profiles.



### COUPLER SET

To extend your Freedom configuration to the desired length, a convenient coupling set is available for connecting two length profiles. This profile coupler set is provided with all the bolts and nuts necessary for assembly.



For detailed instructions and information, please refer to the product manual.

# SINGLE RIGGER

Start building your light show around the Admiral Single riggers and create a spectacular wall of light for your show. The Single rigger is a simple solution that creates a wonderful effect using length profiles from our Freedom system. The Single rigger can be extended past its regular length by connecting multiple profiles together.

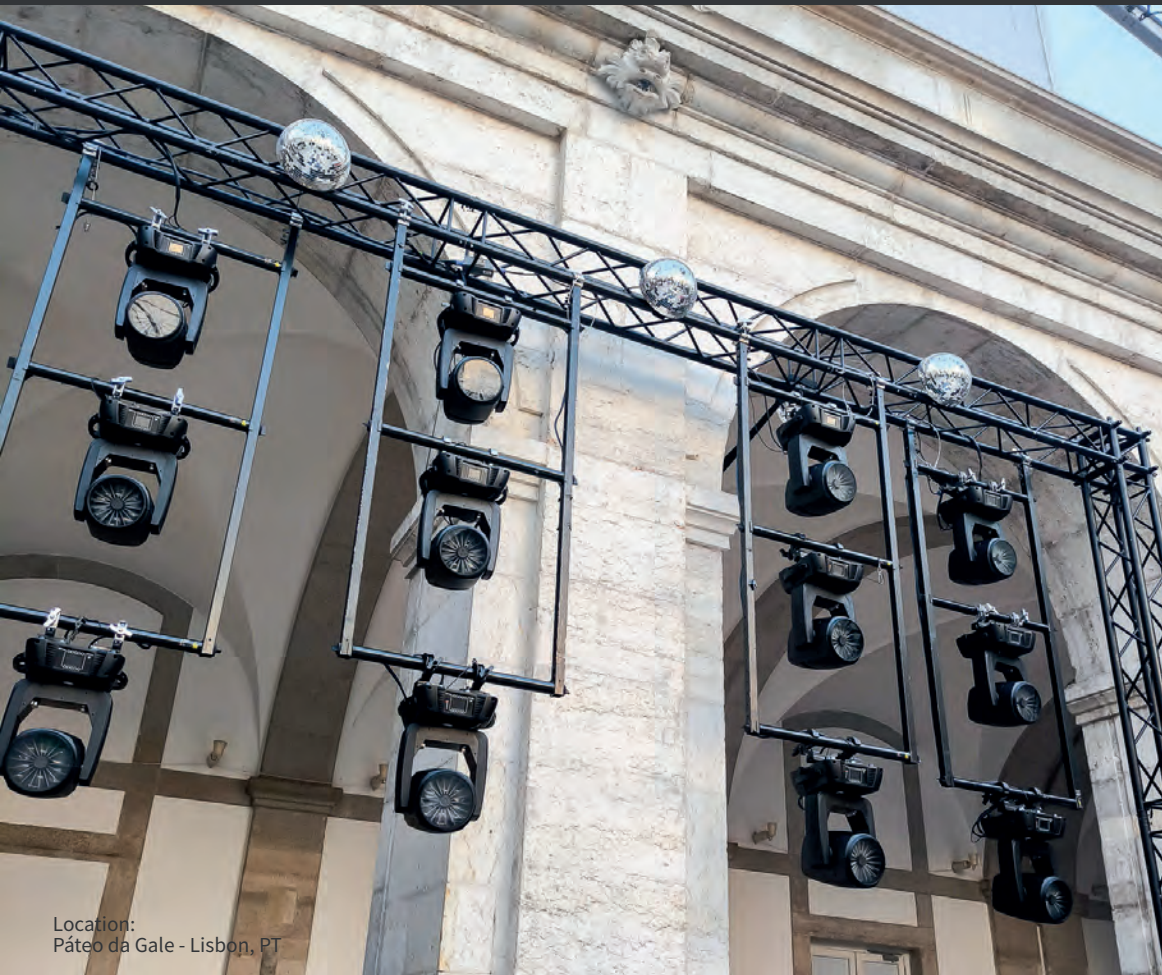




# DOWN RIGGER

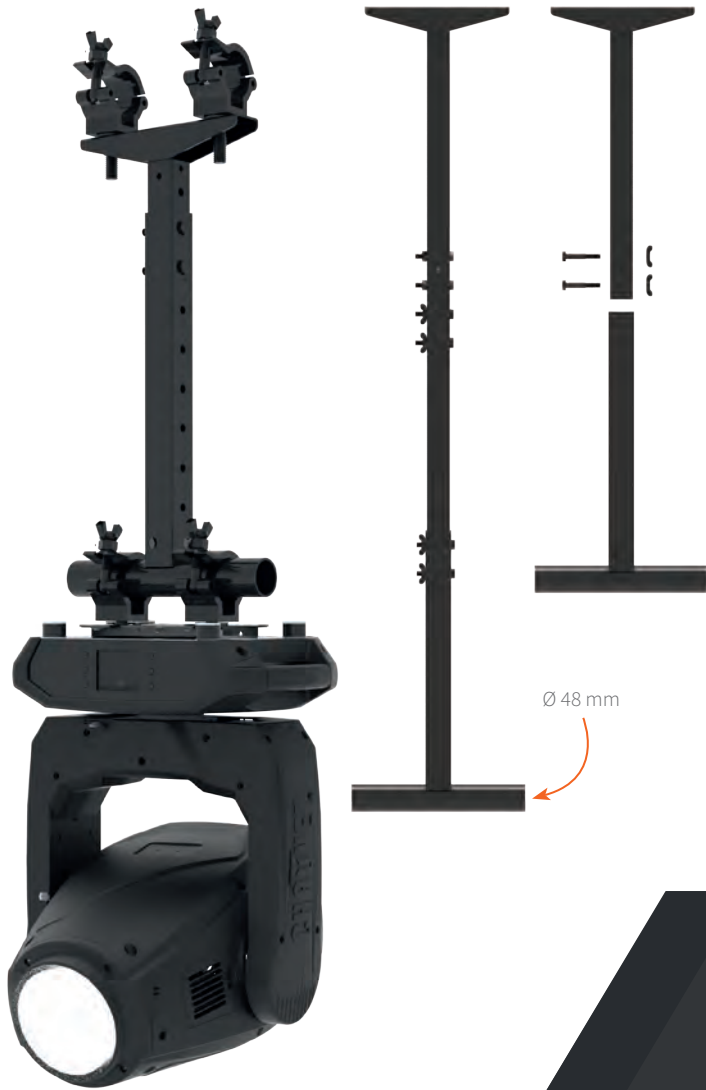
Combine length profiles with hanging tubes and set up one or even multiple Down riggers to create an impressive light structure. Adding hangers between our length profiles provides you with the possibility to hang multiple fixtures in a row.

Like the Single riggers, each length profile can be extended in length, but with a Down rigger set you can even create a drop of 6 meters!



Location:  
Páteo da Gale - Lisbon, PT





# DROP ARM

You might have seen them before, but never this clever!

With our Drop arms, you can easily suspend your equipment from a truss or fixed tube. The Drop arms can be extended in length and they can also be combined with hanging tubes. Just imagine all the lighting effects you can create!





Location:  
Arriba by the Sea - Lisbon, PT

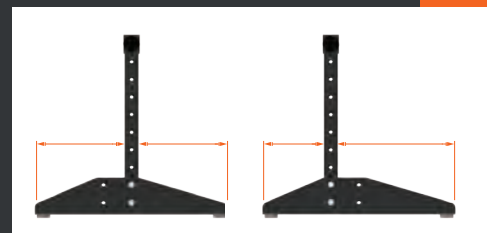


Fold your Floor rack for easy storage and transport using the flexible base. Simply remove the top bolts and fold the construction over, no further disassembly required.

# FLOOR RACK

Have you already gotten your hands on our Down rigger system? Then you are one step away from using it as a lighting tower.

You simply turn a Down rigger upside down, slide it into the flexible base and your Floor rack is born. You can use it as a sidelight tower or floor stand. Our modular system allows you to easily expand your Floor rack construction horizontally by joining Floor racks to each other using hangers.



Position your profiles symmetrically or asymmetrically into the base.

# LOW HANGER TUBE

These versatile Low hanger tubes are the perfect tool for easily rigging equipment such as lighting fixtures, video projectors, sound systems and more. With a sleek and modern design, these tubes seamlessly integrate into any setup. Equipped with an M10 bolt fitting, they can be connected to your gear, clamps or couplers in no time. Two gaps at the ends of the tubes enable you to easily secure them and your equipment with safety cables.



For detailed instructions and information, please refer to the product manual.





# MONO STAND<sup>®</sup>



The Mono stand can be used to install equipment vertically from the ground, saving space in areas where a tripod is not an option. Mount it easily onto a baseplate with an M12 bolt and secure tubes or profiles with butterfly bolts. It supports tubes and profiles with diameters of 38-55mm, with a max load of 60 kg for fixtures, cameras, decorations and more. Its compact design allows for multiple Mono Stands to be installed on one baseplate.

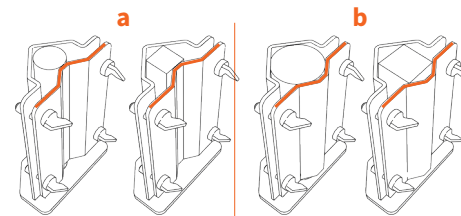
RIGGING

02



The positioning of the front plate depends on the diameter of the tube.

28 mm - 38 mm: (a)    
48 mm - 62 mm: (b)  



Accommodates various circumferences due to the versatile front plate positioning.



For detailed instructions and information, please refer to the product manual.

# GRID SYSTEM

03

Versatile and sturdy, the Admiral Grid is the ideal solution for improving the flexibility of your club, conference room, theatre space or retail location. Designed as a modular system, you can easily choose the components that will allow you to build the rigging option most suitable for your own space and needs.

Whether you need to install lighting in a theatre with low stage clearance, rig a projector in a college room or hang display items in a fashion store, the Admiral Grid system is the perfect fit. Optionally, AC power sockets, signal-connections or network infrastructure can be added, creating the perfect infrastructure for your venue.

## 03 GRID SYSTEM

BUILD A GRID  
FLEXIBLE GRID

40  
43





# BUILD A GRID



## 1 GRID ALUMINIUM TUBE

The black-coated grid tubes Ø 50 mm, available in 3 m and 6 m lengths, are the base of the Grid system. Opt for the Pantser-coating version for enhanced durability against wear and tear.

1



## 2 GRID BRACKET 48/51 mm

Mount the grid tubes to the ceiling with this adjustable bracket. Single use has a WLL of 40 kg, double use has a WLL of 80 kg.

2



## 3 GRID WALL BRACKET

Mount the grid tubes firmly to the wall with our wall bracket.

3



#### 7 GRID TUBE CONNECTOR

Connect multiple grid tubes to create the desired grid measurements.



#### 6 GRID BRACKET 90°

Clamp two grid tubes together with this bracket to create a solid framework for your grid.



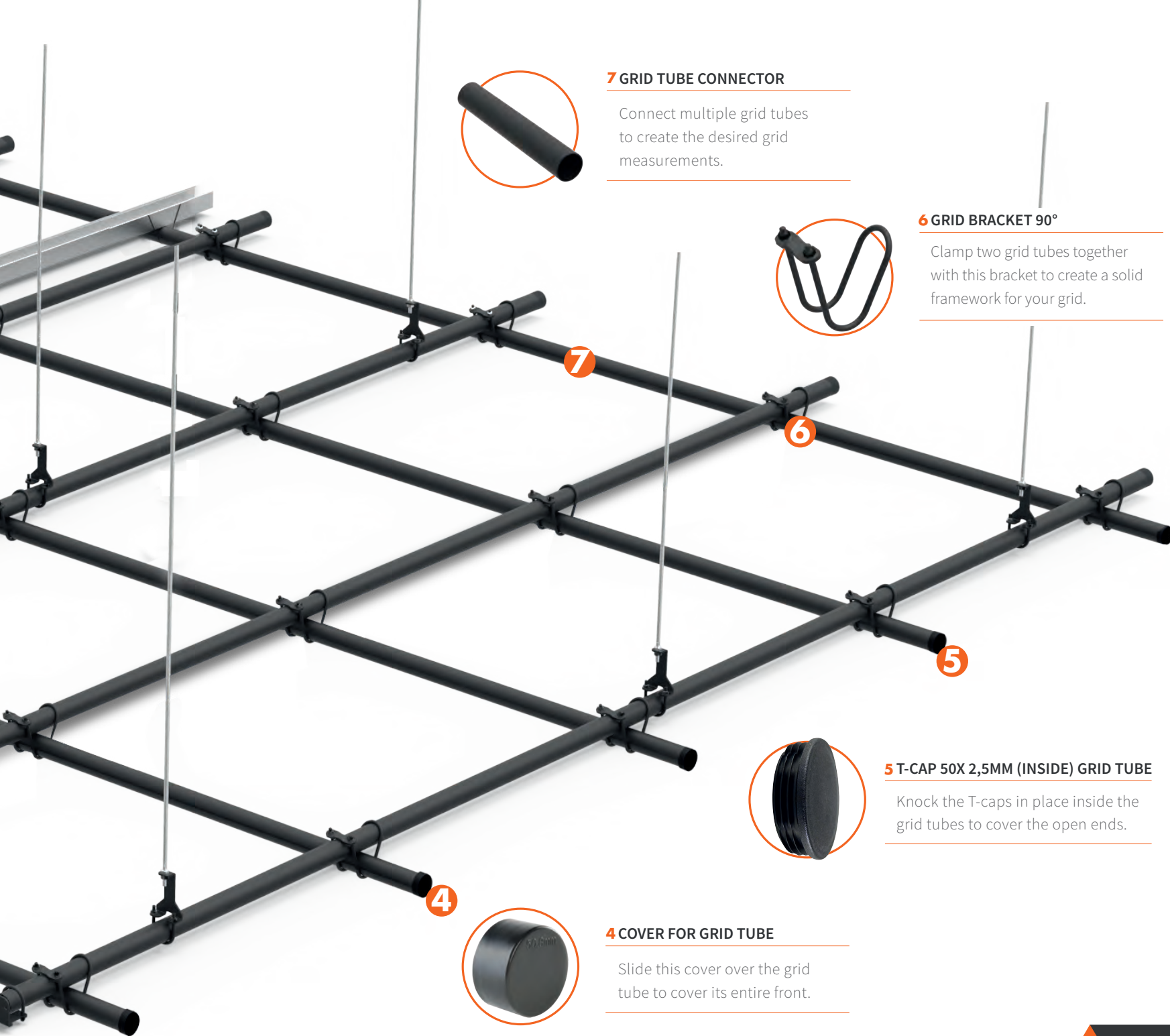
#### 5 T-CAP 50X 2,5MM (INSIDE) GRID TUBE

Knock the T-caps in place inside the grid tubes to cover the open ends.

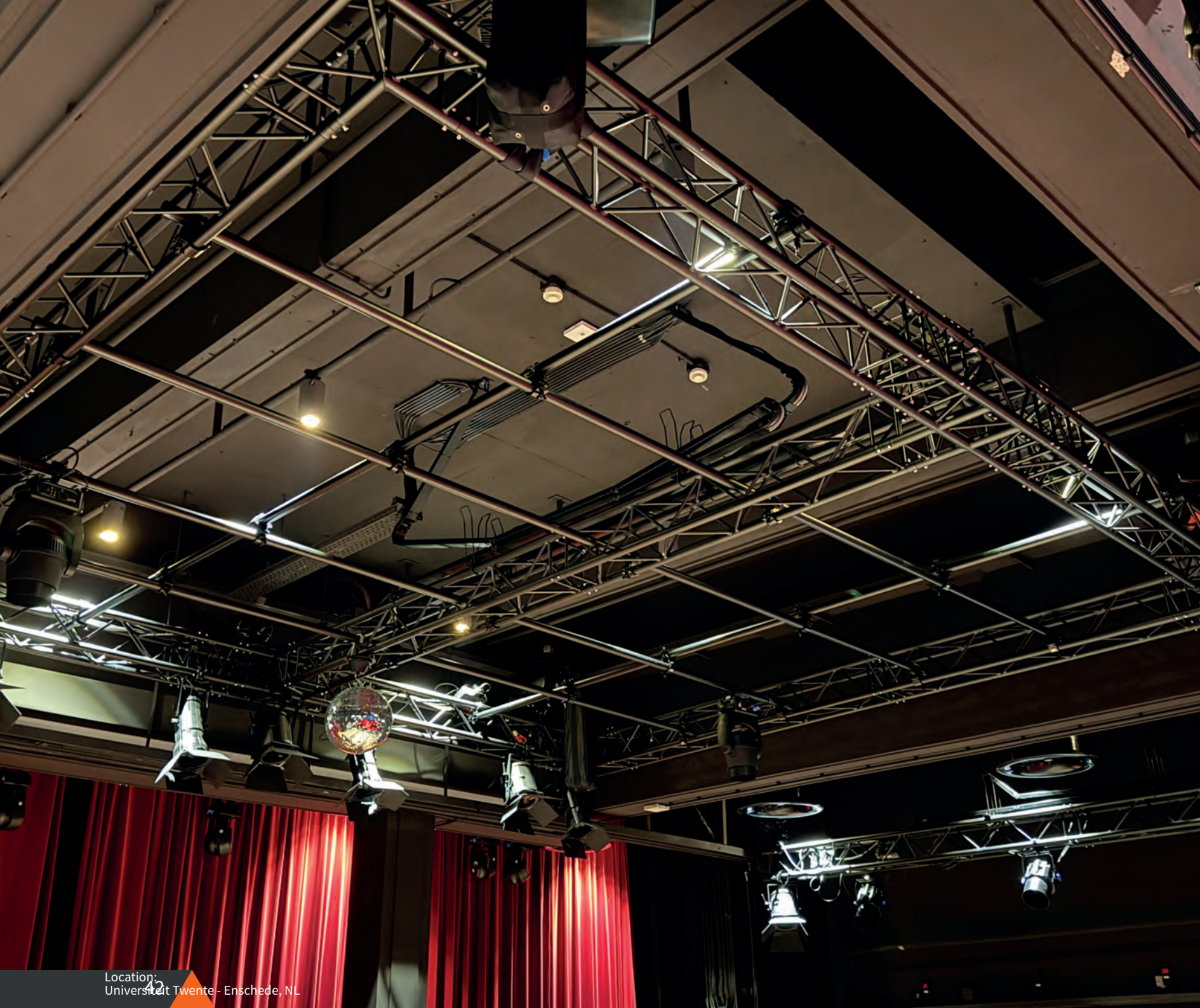


#### 4 COVER FOR GRID TUBE

Slide this cover over the grid tube to cover its entire front.





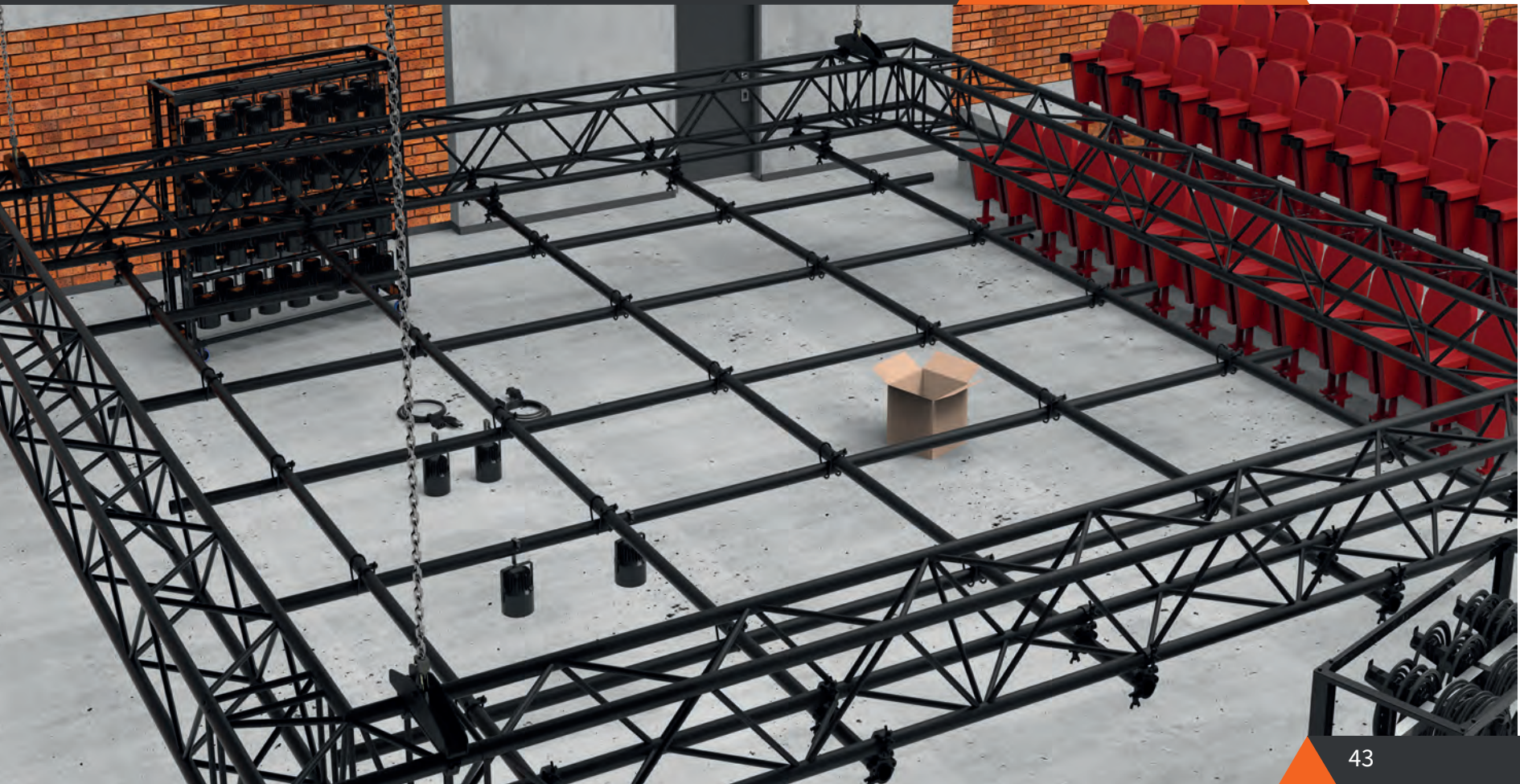




# FLEXIBLE GRID

Do you need an installation that can be easily moved up and down, eliminating the need to perform equipment adjustments high above the floor?

The Grid system can be installed in a truss construction, and with a simple push of a button, the whole installation can be lowered effortlessly. This type of installation not only speeds up the adjustment of the lighting plan but also significantly improves safety and accessibility to your gear. It eliminates the necessity for adjustments to fixtures and other equipment at heights, a task increasingly subjected to strict safety measures.



# CABLE GUIDES

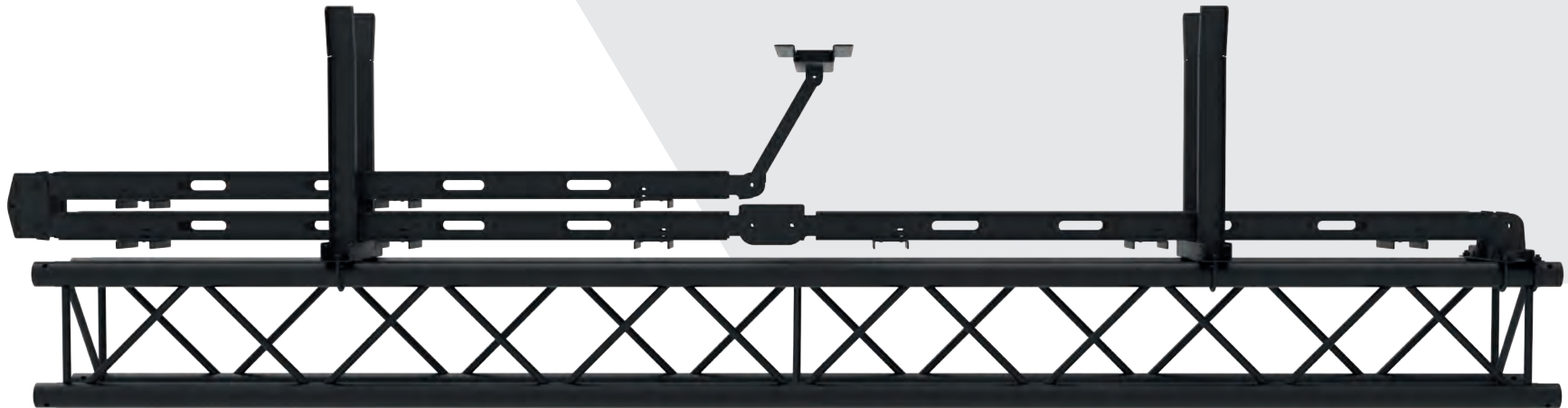
04

Permanent installations of truss systems require a neat solution to route all the cables of suspended light and audio equipment, especially if the truss has to be raised or lowered regularly. With Admiral's range of cable guides, cables of all types and sizes can be neatly and securely fastened to a truss system, allowing it to travel up and down without the risk of knots and loops.

## 04 CABLE GUIDES

L & XL CABLE GUIDE  
SNAKE® CABLE GUIDE

47  
51







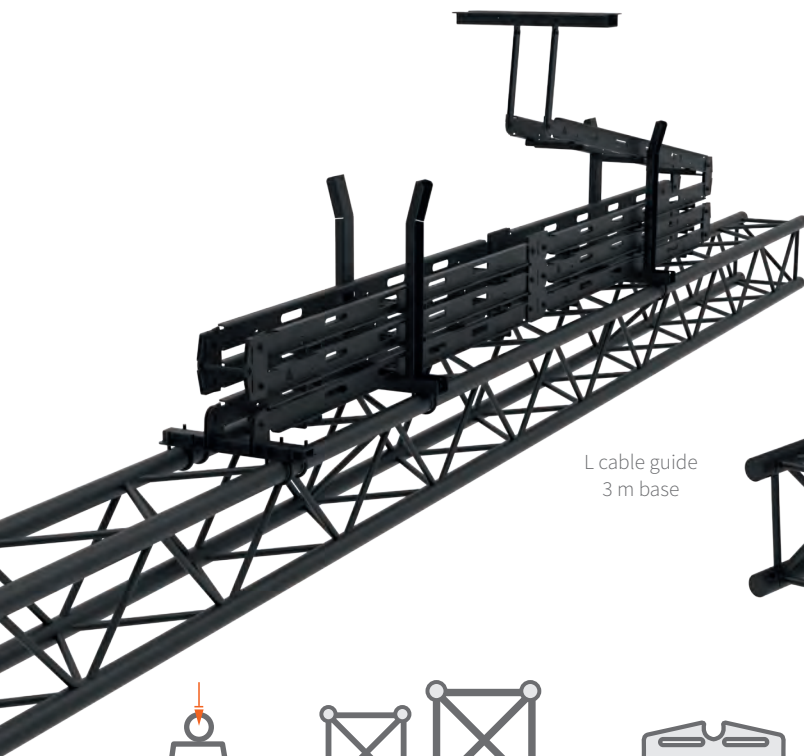




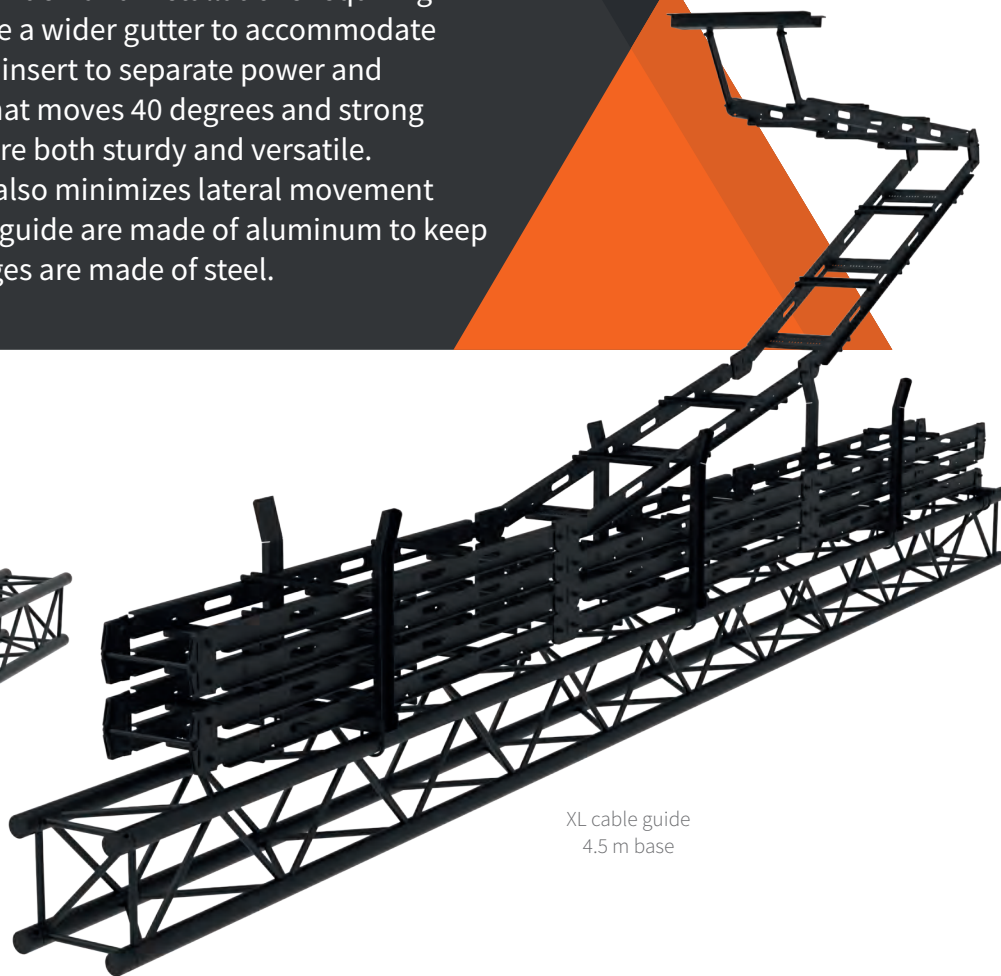


# L & XL CABLE GUIDE

The L & XL cable guides are designed for high-demand installations requiring numerous cables. These cable guides feature a wider gutter to accommodate more cables and can be fitted with a divider insert to separate power and signal cables. With a flexible middle hinge that moves 40 degrees and strong corner hinges that move 170 degrees, they are both sturdy and versatile. The top hinge, equipped with length strips, also minimizes lateral movement during use. The length sections of the cable guide are made of aluminum to keep the weight as low as possible, while the hinges are made of steel.



L cable guide  
3 m base



XL cable guide  
4.5 m base



100 kg/m



Mount on  
30 and 40 truss



Strong and solid hinges  
with freedom to move



Robust design



Available  
colours



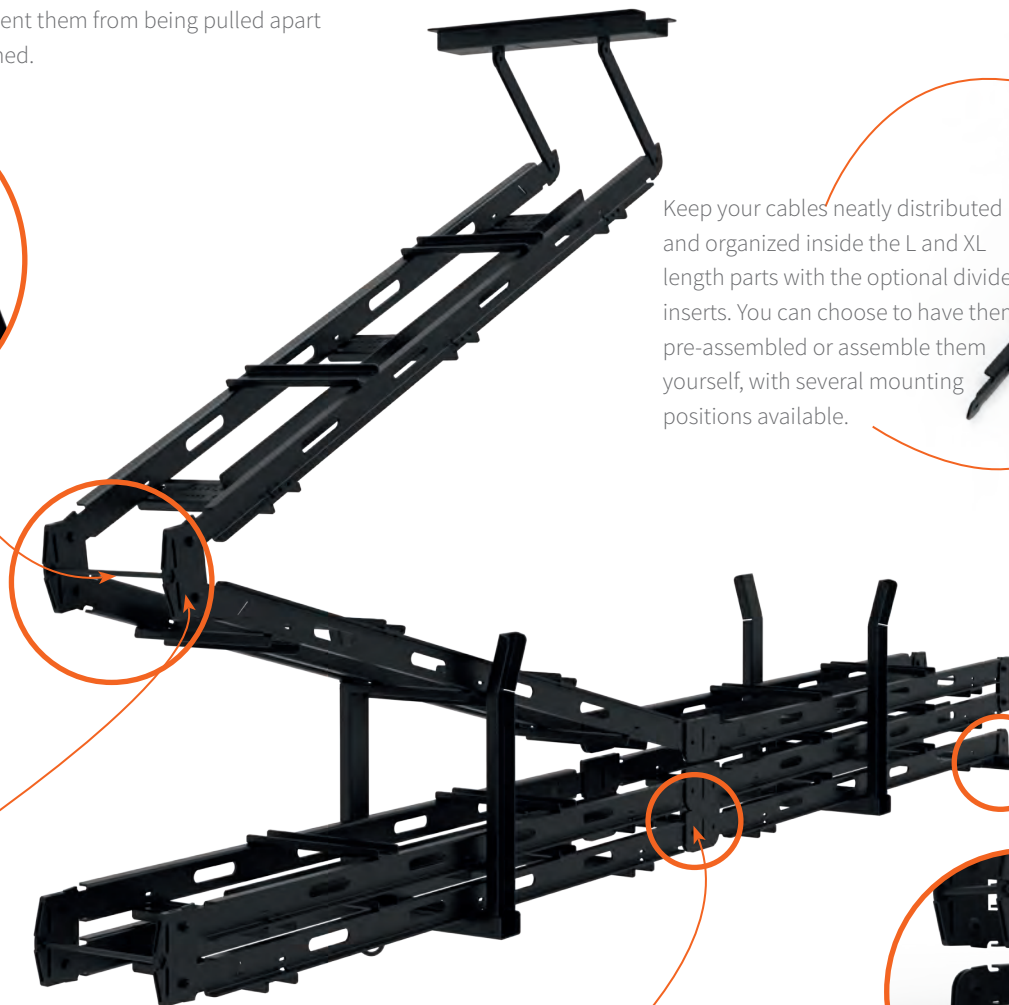
For detailed instructions and information,  
please refer to the product manual.



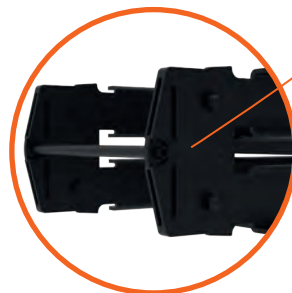




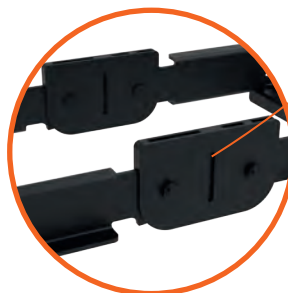
The L and XL are equipped with a rod between the corner hinges that acts as a guide for the correct cable length. By placing the cables outside these rods, you ensure they have enough length to move freely and prevent them from being pulled apart when the cable guide is stretched.



Keep your cables neatly distributed and organized inside the L and XL length parts with the optional divider inserts. You can choose to have them pre-assembled or assemble them yourself, with several mounting positions available.

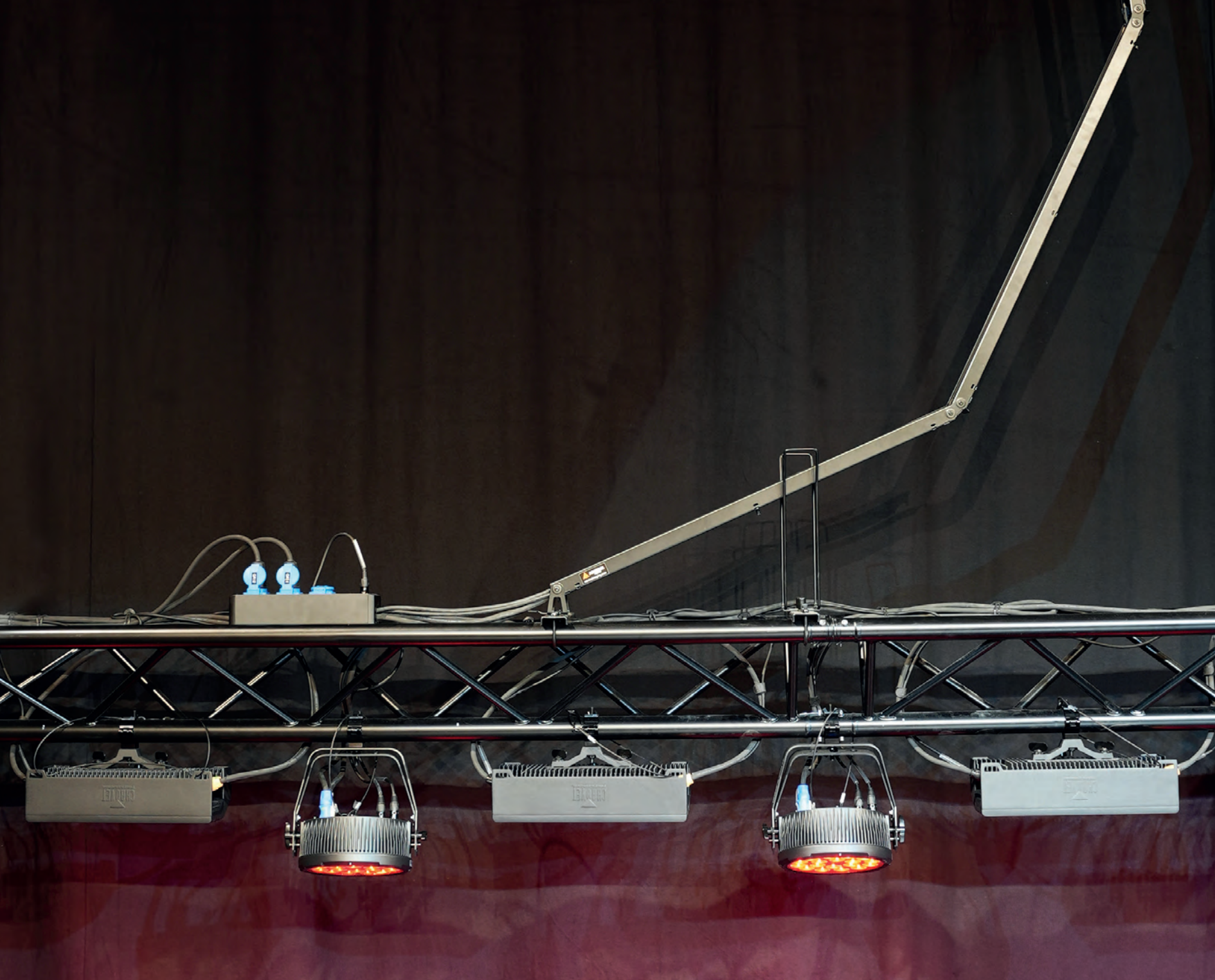


To reduce lateral movement in the truss structure, the L and XL cable guides feature two types of hinges that can move 40 and 170 degrees. Together with the built-in bearings, this allows the cable guides to move smoothly and easily.



The cable guides fit both 30 and 40 trusses, square or triangle. By default, they fit 30 truss and can be mounted with the included U-bolts. For 40 truss, a matching adapter is needed for the catch arms and the lower hinge.

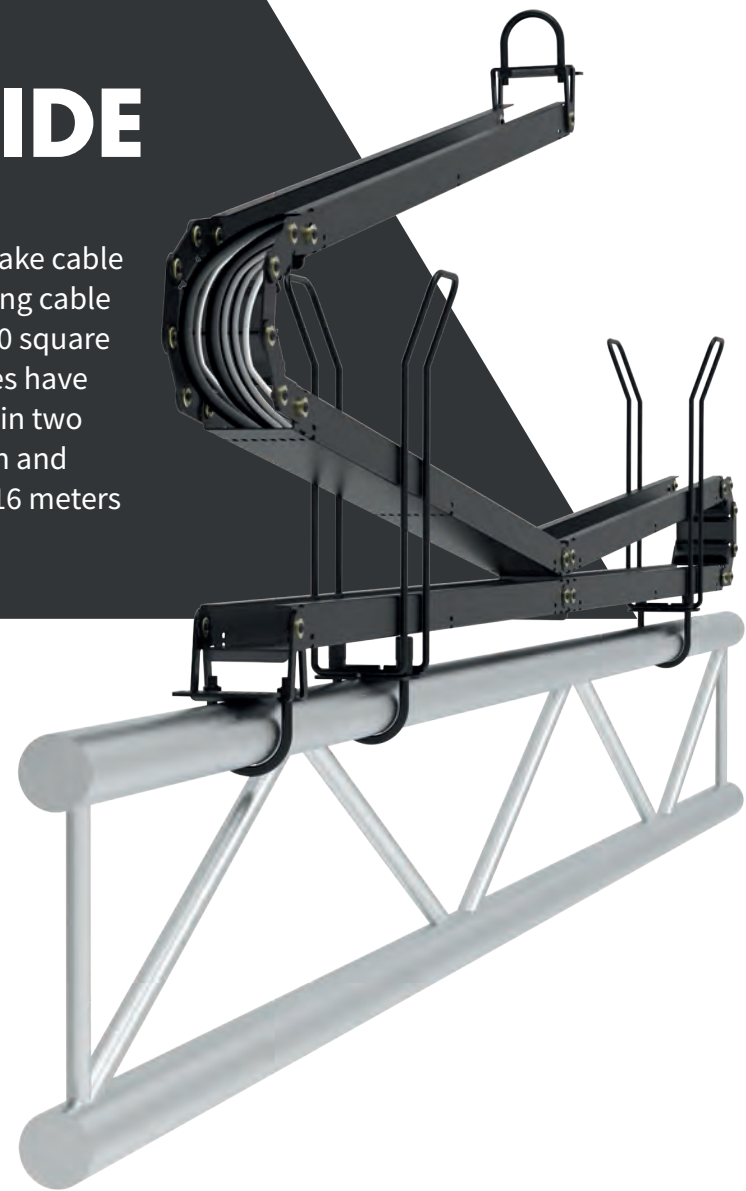






# SNAKE<sup>®</sup> CABLE GUIDE

An innovative and versatile cable management solution, the Snake cable guide helps you prevent technical hiccups from happening during cable routing. The Snake can be mounted onto single tubes, 30 and 40 square and triangle trusses. Made from 1.5 mm steel, these cable guides have a strong construction designed for long-lasting use. They come in two finishes: stainless steel or a durable black coating. Various width and height configurations are available, with options for heights of 16 meters and more.



CABLE  
GUIDES

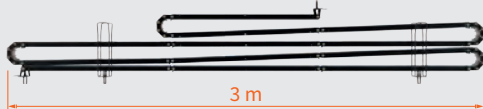
04

## VARIATIONS

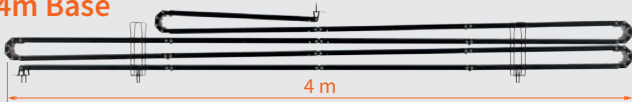
### 2m Base



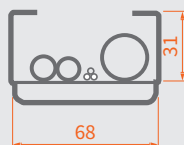
### 3m Base



### 4m Base



Mount on single tube,  
30 and 40 truss



68 mm gutter  
for routing your cables



Unique hinges that increase  
the bending radius



Minimal lateral  
movement



Available  
colours







The hinges feature an interlocking mechanism that reduces lateral movement during hoisting, ensuring a more controlled lifting and improved overall stability.

The Snake's pivoting hinges ensure that cables are gently bent around a minimal diameter, making it ideal for less resilient cables, such as fibre optic ones.

These cable guides can be customized on request using our 0.7 and 1 meter length parts. They can have a base from 2 to 5 meters and reach up to 26 meters in height.

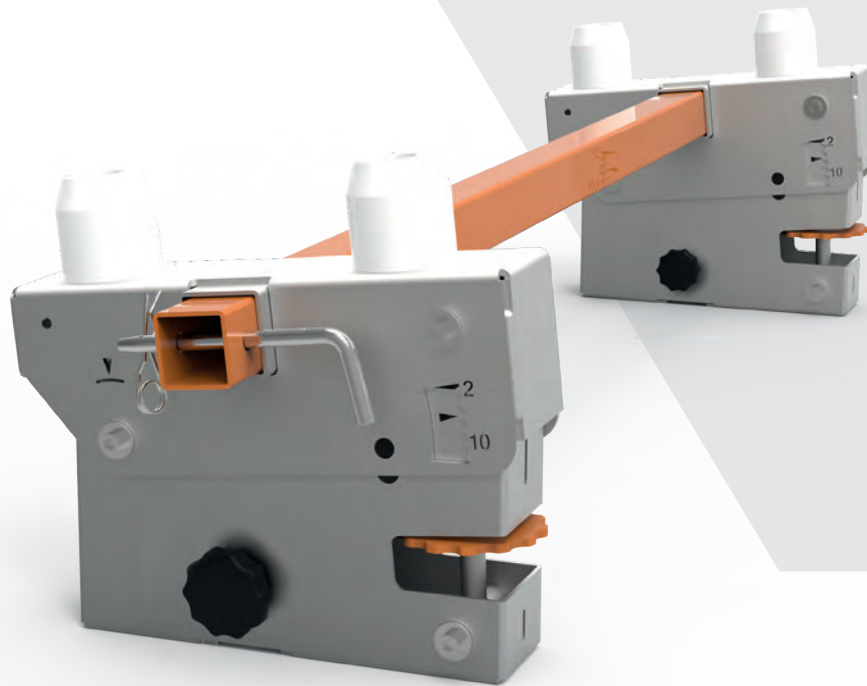
The Snake's durable construction is built for long-term use. Equipped with brass bearings, this cable guide ensures years of reliable, high-performance operation.

By mounting Snake elevation parts, you gain additional space for organizing cables or clamps on the tube or truss, offering a cleaner look and more room for lighting.

# BUILD A RAMP

05

Always struggling to build a ramp for your stage? Rolling flight cases and other equipment on your stage has never been simpler! With our Ramp support systems, you can build your ramp in just a few steps. Based on the height of your stage, multiple stage decks can be joined and secured together using one of our ramp systems.



## 05 BUILD A RAMP

FLEX RAMP SYSTEM®

RAMP SLOPE

RAMP SUPPORT SYSTEM®

ALL-IN-ONE RAMP SUPPORT®

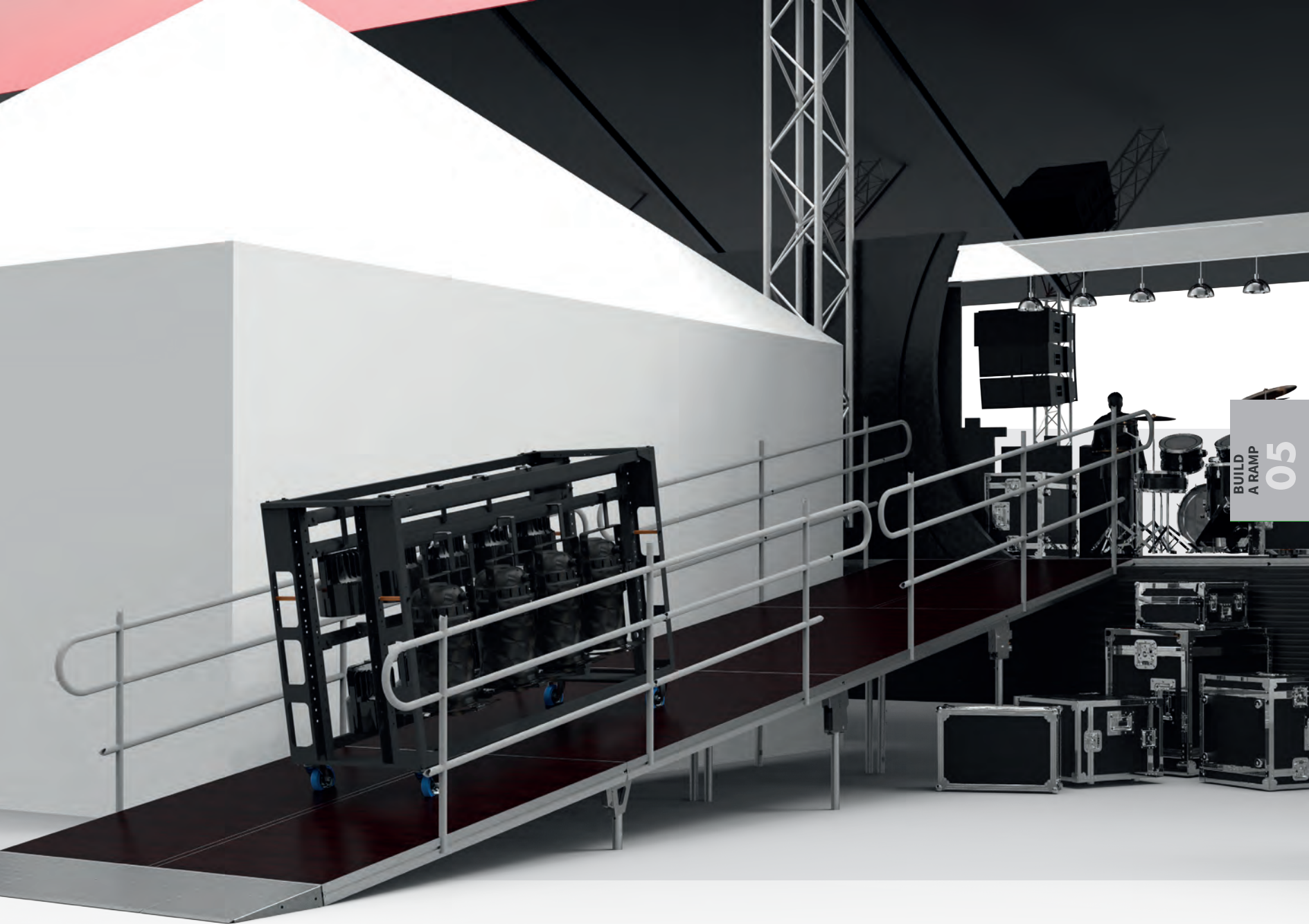
56

57

58

59

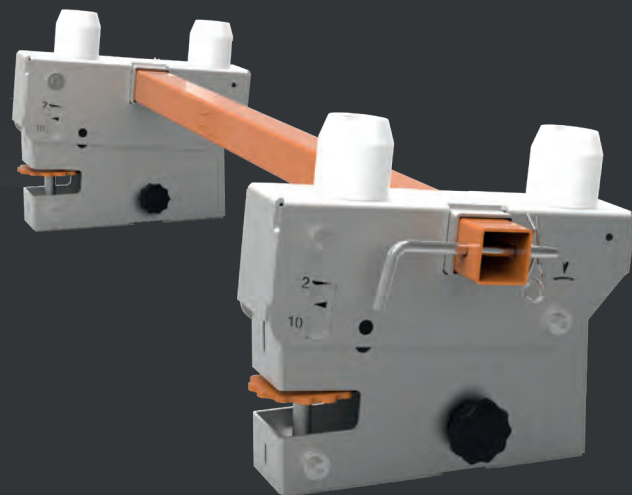




BUILD  
A RAMP  
05

# FLEX RAMP SYSTEM<sup>®</sup>

Easily customize stage ramps for various heights using our Flex Ramp system. With three types of Flex components, you can create ramps for stage heights between 40 and 180 cm. Depending on your desired height, the ramp can consist of 2 to 6 decks and span between 4 and 12 meters in length. Scan the QR code to determine which specific Flex Ramp elements to use for your desired ramp height.



Compatible with Prolyte, Nivtec, Innodeck and Sixty82 Stage 82. Please note that Eurotruss decks are not compatible.



## 1 Flex Housing Set

The Flex Housing Set joins two stage decks while also functioning as the foundation of each leg. The set includes two Flex house elements and a Brace tube which connects them together.



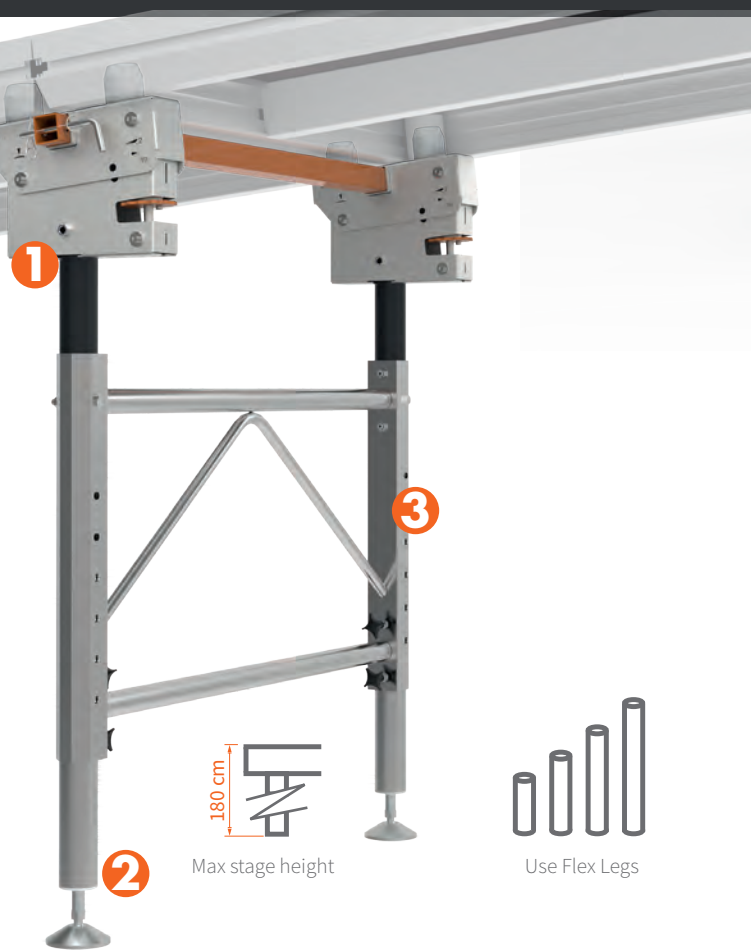
500 kg/m<sup>2</sup>  
for the whole construction



NO dynamic loads  
such as e.g. cars



Suitable for building ramps  
with lower slopes







Scan the QR code to determine which specific Flex Ramp elements to use for your desired ramp height.



## 2 Flex Legs

These special Flex Legs come in different heights, making the Flex Ramp system very flexible. Adjust each Flex Leg to the desired height within its range by turning its spindle.



## 3 Flex Frame

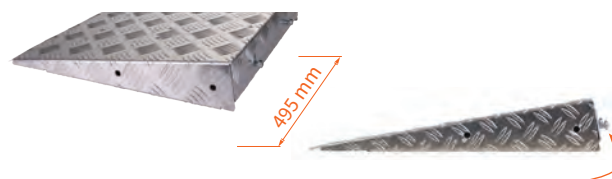
The Flex Ramp system works for stages up to 180 cm tall. To keep the ramp stable at these heights, the Flex Frame is required to ensure lateral stability. From a height of 70 cm and more, it is necessary to use a Flex Frame.



For detailed instructions and information, please refer to the product manual.

## RAMP SLOPE

Easily finish off your ramp using these handy compact ramp attachments. Their small size and lightweight design ensure easy handling. In addition, they hook themselves onto the stage decks for optimal safety. The parts are provided with anti-slip rubber feet and can be linked, if desired, with two M10 screws.



0.5 m parts make it possible to use this slope for every stage deck width

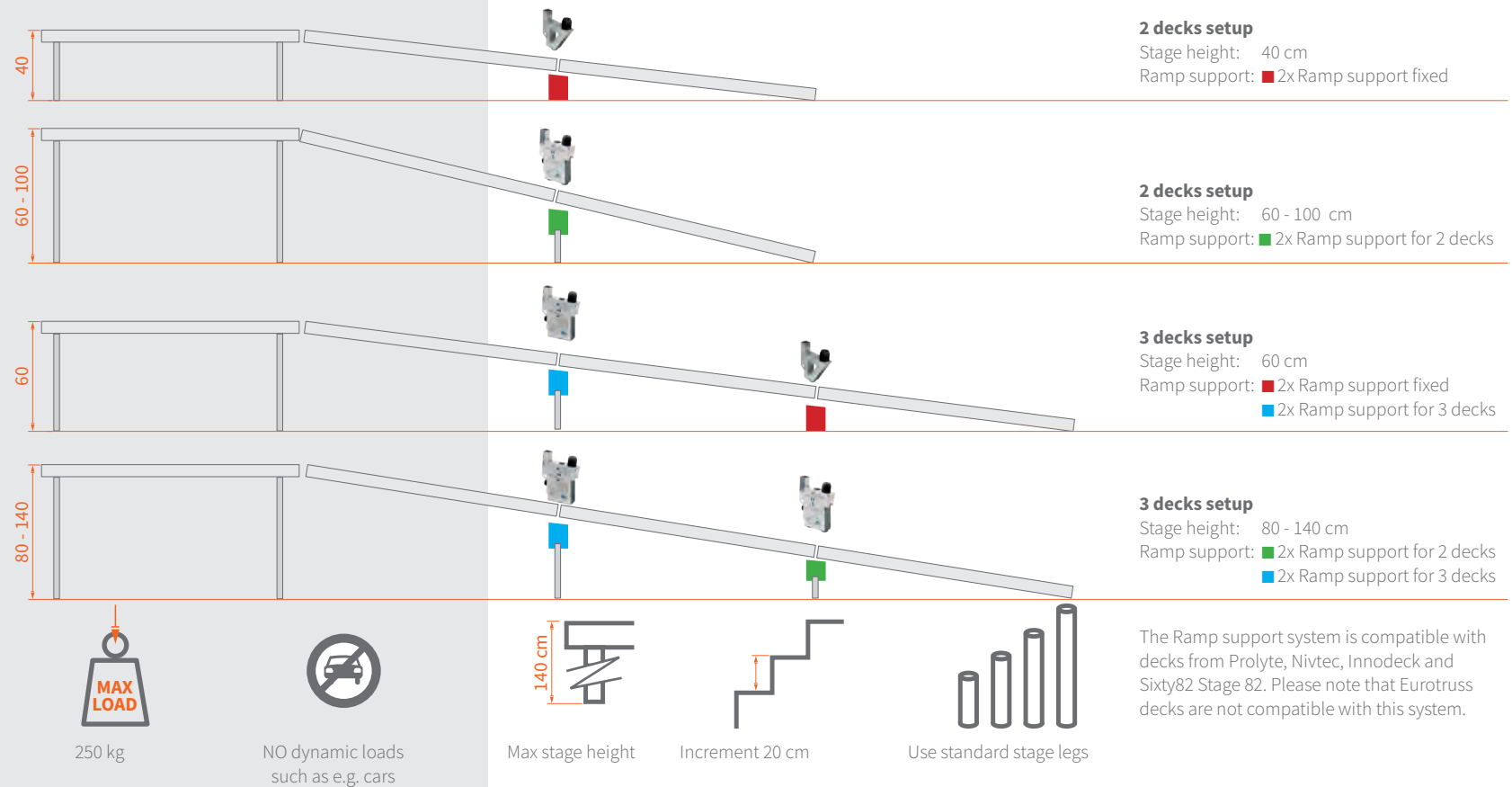
Hook the slope on to the connecting profile of your stage deck



Equipped with rubber feet to prevent it from slipping

# RAMP SUPPORT SYSTEM<sup>®</sup>

The Ramp support system consists of three different products, the Ramp support fixed, the Ramp support for 2 decks and the Ramp support for 3 decks. Depending on the desired height of the ramp you are trying to build, the ramp will be 4 or 6 meters long. This system is equipped with a unique adjustment feature allowing you to use your standard round stage legs to build ramps from 40 cm up to 140 cm in height.





# ALL-IN-ONE RAMP SUPPORT<sup>®</sup>

The ALL-IN-ONE ramp support allows you to build a ramp using only one support element. For this ramp support system you need to use custom-made stage legs cut to the different desired heights. By using the ALL-IN-ONE ramp support in setups of 2 or 3 decks, you can build a ramp with a height of 40 up to 120 cm, with increments of 15 or 20 cm.



BUILD  
A RAMP  
05

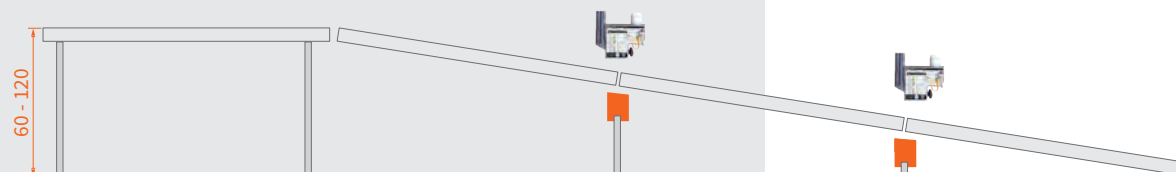


## 2 decks setup

Stage height: 40 - 80 cm

Required products:

- 2 x ALL-IN-ONE ramp support



## 3 decks setup

Stage height: 60 - 120 cm

Required products:

- 4 x ALL-IN-ONE ramp support



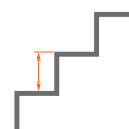
100 kg



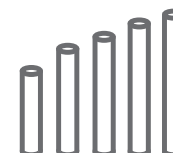
NO dynamic loads  
such as e.g. cars



Max stage height



Increment 15/20 cm



Use custom made legs

The All-in-one ramp support is compatible with decks from Prolyte, Nivtec, Innodeck and Sixty82 Stage 82. Please note that Eurotruss decks are not compatible with this ramp support.

# LIGHTING

A successful performance doesn't depend on the band alone. To make your event stand out and captivate your audience, you need to focus on the details.

Our Vintage Luminaires can help you enhance the look and feel of any event space, add visual impact to an area and create the right ambiance.

06



## 06 LIGHTING

VINTAGE® LUMINAIRES  
LUMINAIRE TRIPOD

62  
63

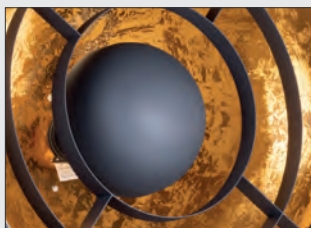






# VINTAGE<sup>®</sup> LUMINAIRES

Enhance the look and feel of any event space with our Vintage Luminaires. You can use these decorative fixtures for your TV shows, theatre productions or for live bands to add visual impact to an area and to create a specific atmosphere. The fixture has a golden reflector finish and two concentric black metal rings for a vintage spotlight look. The adjustable brackets allow you to use the Vintage in multiple ways: hang it on a drop arm, mount it on a tripod with one bracket or place it on the floor with both. You can also interlink several Vintage luminaires using their sturdy brackets.



Reflective shell



Seetronic true1 connector



Sturdy, adjustable bracket



Interlinkable



Fitting E27  
60W (bulb included)

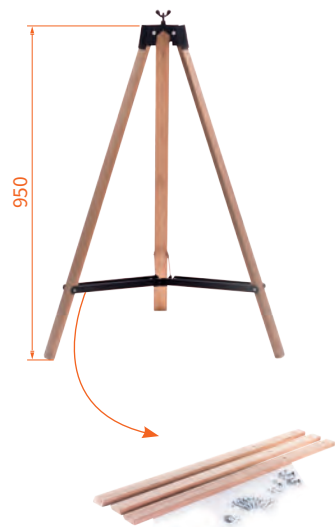


Available diameters:  
Ø 380 mm & Ø 530 mm



# LUMINAIRE TRIPOD

Complete your setup by extending the luminaires with the help of our Luminaire tripod. The tripod has a standard length of approximately 1 meter and can be further extended to 1.55 meters with an extension set.



Extension set available to increase the tripod height to 1.55 meters. Only suitable for static lights



10 kg



LIGHTING

06

# TRUSS ACCESSORIES

The use of aluminium truss systems as both a decorative and functional application has spread from its customary role in temporary event productions, into a wide range of commercial installations. At Admiral Staging, we offer a variety of truss accessories to help you lift, suspend and transport your truss safely and efficiently, including different types of mounting brackets, truss carriers and more.

07



## 07 TRUSS ACCESSORIES

TRUSS TOPPER FLOOR STAND®	66
THE BRICK®	67
TRUSS CARRIER	68
TRUSS WALL MOUNT 30	71
TRUSS BRACKET	72
MOUNTING BRACKET	73
BASEPLATES	74





# TRUSS TOPPER FLOOR STAND<sup>®</sup>

The Admiral Truss topper/Floor stand is a game changer. It is stackable, anti-slip and versatile. With an ELL of 100 kg and equipped with a round tube for theatre hooks and half-couplers, it can be mounted either above or below your 30 truss, giving you a temporary or permanent solution for adding fixtures or other equipment. It can also be used as floor stand, thanks to the anti-slip rubbers. This will give you more setup options during your event.



Ø 50 mm



Use the  
Truss topper/Floor stand  
as a Drop arm



100 kg



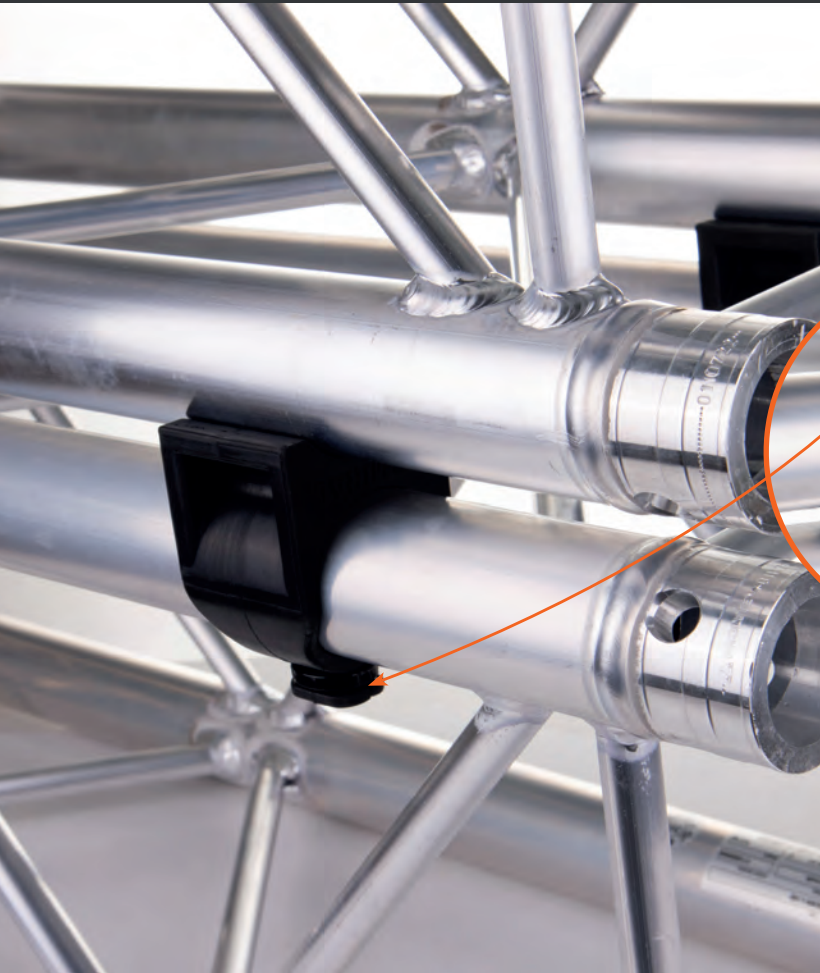
For detailed instructions and information,  
please refer to the product manual.





# THE BRICK<sup>®</sup>

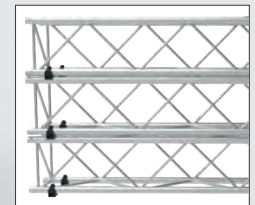
Stack your truss fast and easy with The Brick. Made from durable yet lightweight rubber, The Brick shields both your truss and the ground from scratches during setup and stacking. By using a cable tie, you can fasten The Brick permanently to your truss. This ensures that you can stack truss immediately for storage and transportation. The Brick is suitable for truss with a tube diameter between 48 – 52 mm.



Always secure The Brick with a cable tie



For detailed instructions and information, please refer to the product manual.



Enables simple and secure stacking of trusses



Made out of rubber, prevents the truss from slipping



Perfect for shielding black truss from scratches

© Design registered in the EU

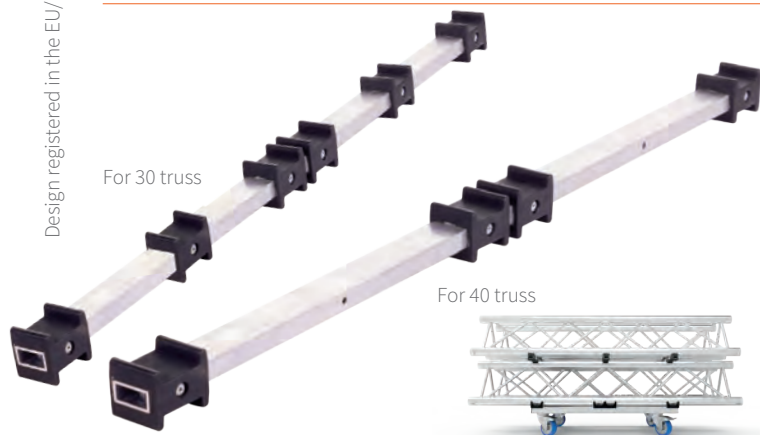
# TRUSS CARRIER

Transport your truss safely and efficiently with our strong, solid and anti-slip Truss carriers. These carriers feature rubber studs molded around the inner aluminum tube, which help the trusses stack easily and with better stability. There are two variations available. The Strong Boy carrier is designed for straight trusses and comes in two sizes: one for triangle or square 30 trusses and one for square 40 trusses. The Strong Girl carrier is meant for circle trusses and also comes in two sizes: for 30 and 40 trusses. If your truss has different dimensions, you can use our Single rubber studs to customize your own carriers for any truss size.

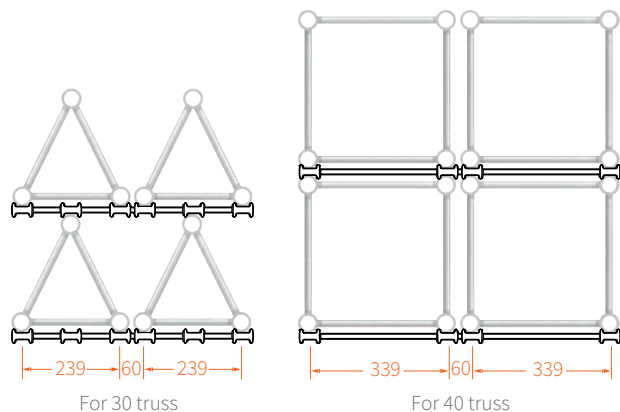




## STRONG BOY CARRIER® for straight truss



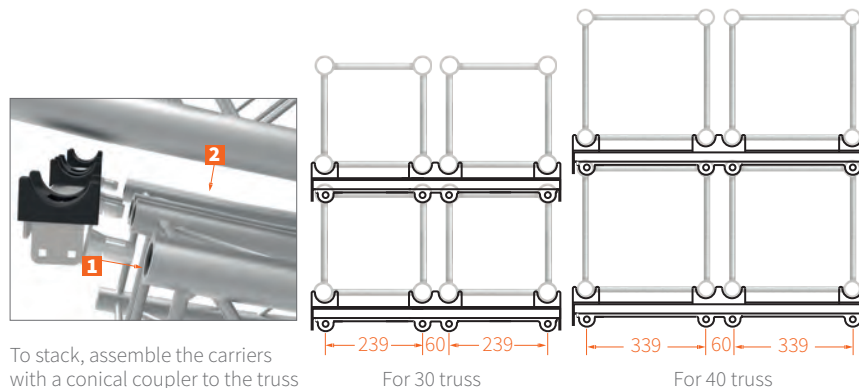
The Truss carriers are compatible with:  
Prolyte, Eurotruss, Global Truss, NEXT Truss and LITEC.



## STRONG GIRL CARRIER for circle truss



The Truss carrier are compatible with:  
Prolyte, Eurotruss, Global Truss, NEXT Truss and LITEC.



## SINGLE RUBBER STUD®

With our Single rubber studs, you are no longer limited to the standard truss carrier dimensions. These allow you to customise your own truss carrier, with dimensions fit for any straight truss you'd like to transport. The aluminium profiles are not provided, but they are available separately.



Single rubber stud

Aluminium profile





# TRUSS WALL MOUNT 30

Easily set up your truss construction between walls without extra ceiling suspension using our Truss Wall Mount 30. Made of strong steel and reinforced side plates, this compact mount provides a durable and secure installation. It has multiple mounting holes and an adjustable fixation profile, making installation more versatile. Compatible with all 30 trusses, the Truss Wall Mount 30 is an ideal and practical solution for compact areas such as classrooms, showrooms and studios.



Adjustable truss positioning thanks to a movable fixation profile **a**



Robust steel construction reinforced with plates on the sides



Multiple holes for versatile assembly to the wall



400 kg per mount



For detailed instructions and information, please refer to the product manual.



The Truss wall mount 30 is compatible with trusses that have a center-to-center distance of 239 mm (30 truss), including Prolyte, Eurotruss, Global Truss, NEXT Truss and LITEC.

# TRUSS BRACKET

Our Truss brackets are ideal to use when truss constructions have to be lifted or suspended by means of a motor or chain hoist. They can be used with 30 truss and have a ELL of 500 kg. You can choose between two versions: one with U-bolts meant for permanent, reliable installations and one with half couplers which allows you to easily switch between truss constructions.



Permanent installation  
with U-bolts



Suitable for  
Ø 48-51 mm

Temporary installation  
with half couplers

Compatible with Prolyte, Eurotruss,  
Global Truss, NEXT Truss and LITEC.



For detailed instructions and information,  
please refer to the product manual.

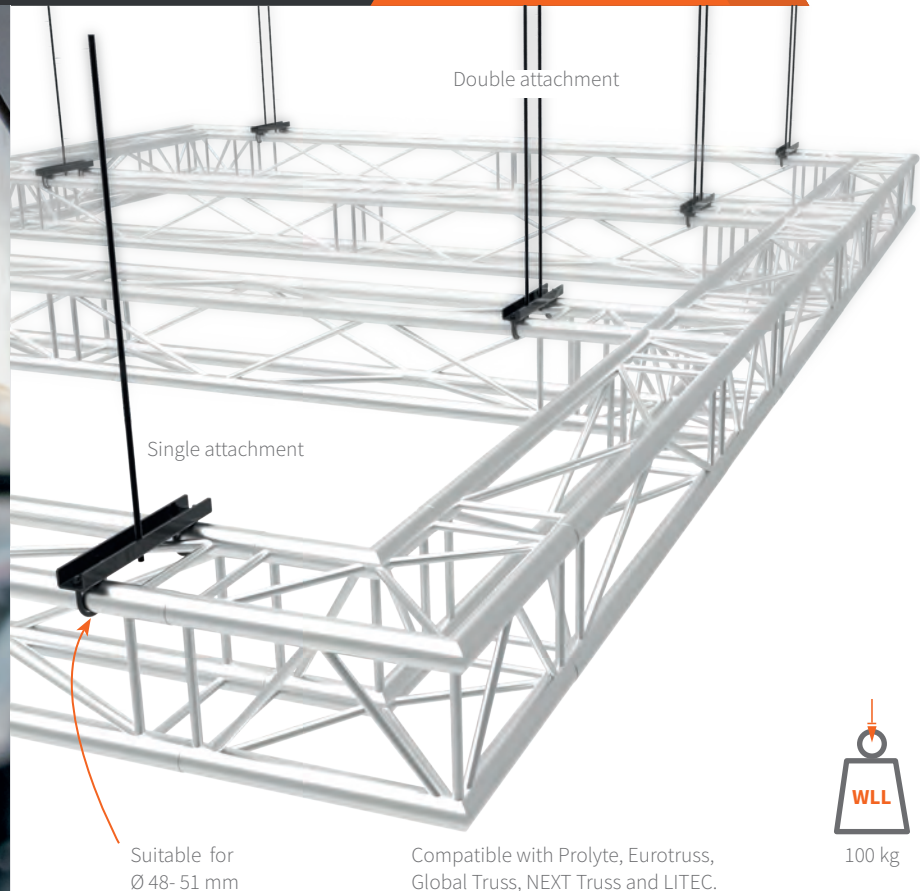


500 kg



# MOUNTING BRACKET

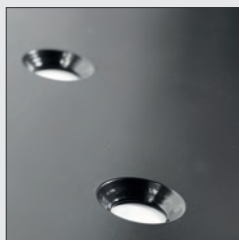
Our Mounting bracket is the ideal solution for hanging your truss 30 from the ceiling in a fixed installation. It attaches to the truss beams with U-bolts and can be secured to the ceiling with either a single or double attachment. For hanging a single truss beam, use a double attachment with two threaded rods. For a suspended truss carré or similar truss constructions, a single attachment with one threaded rod per mounting bracket is sufficient.



100 kg

# BASEPLATES

Our steel Baseplates can be mounted at the bottom of your standing truss structure, providing you with a solid and stable base. Adding 25 kg of weight to the bottom of your truss construction, they are an excellent base for free-standing objects. Pre-drilled symmetrical and asymmetrical holes, suitable for the attachment of M12 conical couplers, make assembly and mounting quick and easy. Attaching your truss with M10 couplers can also be easily done by using our reduction ring.



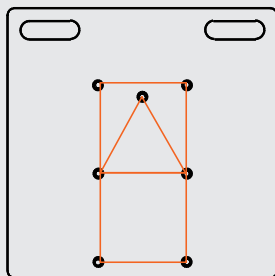
Countersunk holes



Conical coupler

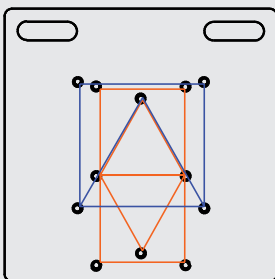


Easy to handle



**Baseplate for 30 truss**

30 truss centre-to-centre  
distance 229 mm



**Combi baseplate 30 and 40 truss**

30 truss centre-to-centre  
distance 229 mm  
40 truss centre-to-centre  
distance 329 mm

Compatible with Prolyte, Eurotruss,  
Global Truss, NEXT Truss and LITEC.

## Symmetrical

30 or 40 truss square or triangle  
positioned centrally



Weight 25 kg



730 x 730 x 6 mm  
(L x B x H)



Available  
colours





For both triangle and square truss

## BASEPLATE FLOOR PROTECTOR

Apply this adhesive rubber mat underneath your baseplates for both floor protection as well as more friction.

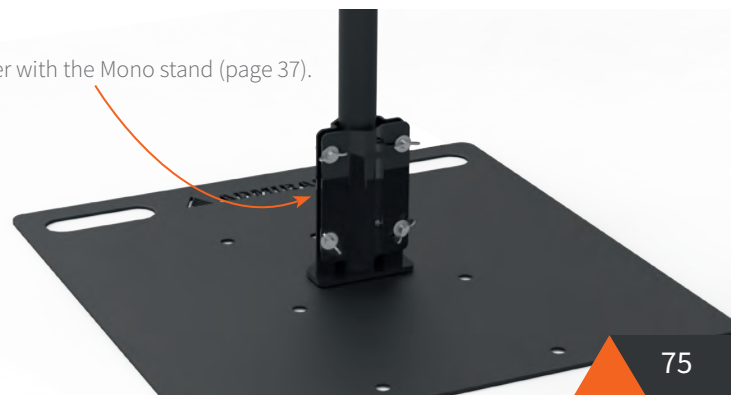


## BASEPLATE REDUCTION RING

Never switch between M10 and M12 bolts ever again with this handy reduction ring.



Use it together with the Mono stand (page 37).



# CLAMPS & SAFETIES

08

Admiral aims to offer a complete product range from which essentials such as clamps and couplers cannot miss. Regardless of what type of equipment you need to rig, our range includes everything from TÜV certified couplers with a weight load limit up to 750 kg to BGV-C1 certified safety cables and more.

## 08 CLAMPS & SAFETIES

SHARK® KEDER CLAMP	78
SAFETY CABLES	79
CLAMPS & COUPLERS	80





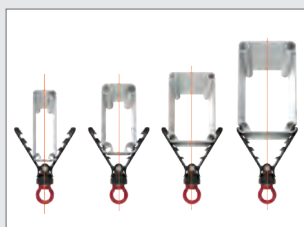


# SHARK<sup>®</sup> KEDER CLAMP

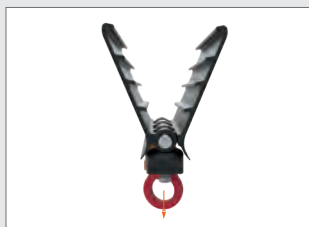
The Shark is a TÜV certified tent clamp designed for quickly and easily installing equipment onto keder profiles. It can be used to create a hanging point on tent profiles, where no other attachment is possible. The Shark accommodates beams from 50mm up to 125mm and it can be quickly adjusted for different widths thanks to its spring loaded clamp. With its constant entertainment load limit of 200 kg, this clamp ensures a secure and reliable installation of your equipment, even for heavier loads such as hoists and truss. The design of the clamp ensures the load is always centric, regardless of the width of the profile.



TÜV certification



Centric load at all times



Constant load limit



Quick assembly onto differently sized beams



Install at an inclination of maximum 18 degrees



For detailed instructions and information, please refer to the product manual.



# SAFETY CABLES

Use certified safety cables to ensure the safety of your crowd!

When hanging staging equipment above a crowd of people you need to use an independent, secondary safety-device according to BGV-C1 and VGB regulations. Our range includes BGV-C1 certified safety cables, available both in a galvanised and black finish, that can be used single or double stranded. Mount your Admiral safety cables in a loop and as short as possible so that, if equipment falls, the safety cable is in the best position to absorb the weight.



Available  
colours



3 diameters  
3, 5 and 6 mm



Lengths  
60 and 100 cm

# CLAMPS & COUPLERS

Admiral offers an extensive selection of clamps and couplers, ranging from aluminium Half couplers to Swivel couplers that can support a WLL of up to 750 kg. Our renowned G- and C-Clamps are also part of our product range. These clamps come equipped with a spring steel protector that safeguards your truss against damage while mounting them.



The Admiral Qwiqr is the next generation sliding connector for clamps. We do have a very good reason to name this item Qwiqr. Because this clamp is quick. Slide the hook into the housing and click!

© Design registered in the EU



## C-CLAMP

Ø 48-51 mm



WLL  
50 kg

## G-CLAMP

Ø 48-51 mm



WLL  
50 kg

## QUICK

Ø 48-51 mm



WLL  
250 kg

## SWIVEL

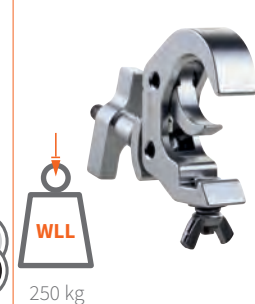
Ø 48-51 mm



WLL  
100/200  
500 kg

## SELFLOCK

Ø 48-51 mm



WLL  
250 kg

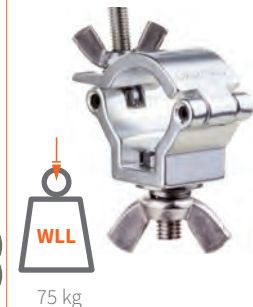
## HALF COUPLERS

Ø 18-21 mm



WLL  
10 kg

Ø 32-35 mm



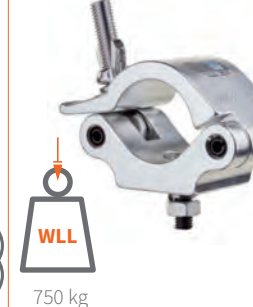
WLL  
75 kg

Ø 48-51 mm



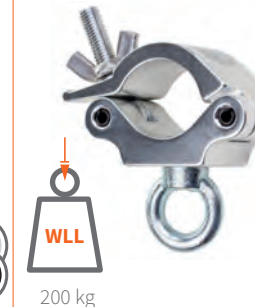
WLL  
100/200  
500/750 kg

Ø 58-61 mm



WLL  
750 kg

Ø 48-51 mm



WLL  
200 kg

Ø 32-35 mm

Half coupler  
with half cone



WLL  
50 kg

Ø 48-51 mm

Half coupler with  
spigot mount



WLL  
250 kg



Scan the code to see  
all the couplers on our  
website.



All our couplers  
are TÜV certified.



For detailed instructions and information,  
please refer to the product manual.

# TEXTILES

Decorate your stage and create a scene with no distraction with one of the options in our textiles range. From stage skirting rolls such as our eco-friendly Pro Deco molton and Hook and loop stage polyester to our heavy-duty Backdrops and Sound absorbing backdrops, at Admiral you can find all the textile essentials you need to create the desired atmosphere for your stage.

09

## 09 TEXTILES

BACKDROPS	84
SOUND ABSORBING BACKDROPS	85
ECO DECO MOLTON	86
HOOK AND LOOP STAGE POLYESTER	87
TRUSS COVERS	88
ACCESSORIES	89









# BACKDROPS

Backdrops play an essential role in creating the right mood and setting for your performance, so we made sure ours are the perfect quality. They are stronger than most backdrops on the market, but still a lighter weight, which makes this fabric wrinkle a lot less. Made out of high quality flame-retardant material, the Admiral Backdrops are available in multiple widths and lengths. They are conveniently equipped with pre-assembled eyelets every 25 cm, making them easy to mount.



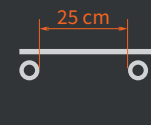
Available  
colours



Flame retardant



Available widths  
3 and 6 m  
Available heights  
3, 3.5, 4, 4.5, 5 and 6 m



Pre-assembled eyelets  
25 cm



Made of Oekotex,  
GRS recycled cotton





# SOUND ABSORBING BACKDROPS

Reduce the amount of external noise in your studio or practice room and improve the internal acoustics with the help of our soundproof curtains. They are a simple and cost-effective solution for dampening sound and can be easily fitted and installed in every space. The Admiral Sound absorbing backdrops are made of high quality, fire retardant fabric weighting 500g/ m<sup>2</sup>. They are equipped with pre-assembled eyelets every 25 cm, making them very easy to mount.



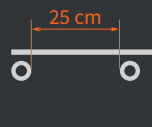
Available  
colours



Flame retardant



Width 3 m  
Available heights  
3, 4 and 5 m



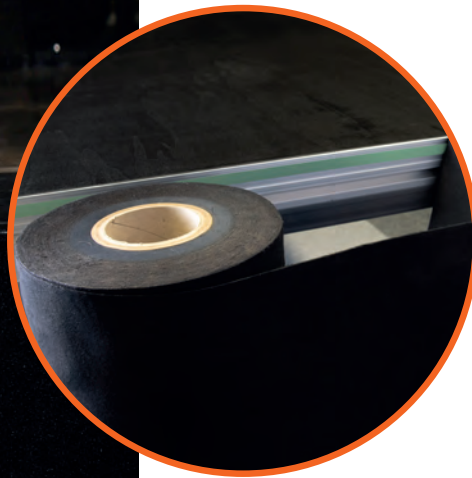
Pre-assembled eyelets  
25 cm



Made of Oekotex,  
GRS recycled cotton

# DECO MOLTON ECO

Made out of 80% recycled cotton, our Deco molton ECO is an eco-friendly alternative to other stage skirting options. The fabric has a similar look to the regular molton, with a slight sheen on both sides. Available in black, the skirting comes in 60-meter rolls with various heights ranging from 20 to 130 cm. Additionally, a roll with a height of 300 cm and customizable width is also available.



Available  
colours



Flame retardant



Available heights  
20, 40, 60, 80, 100, 120, 130 and 300 cm

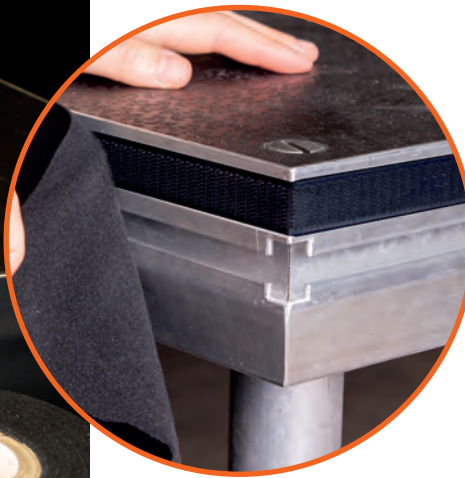
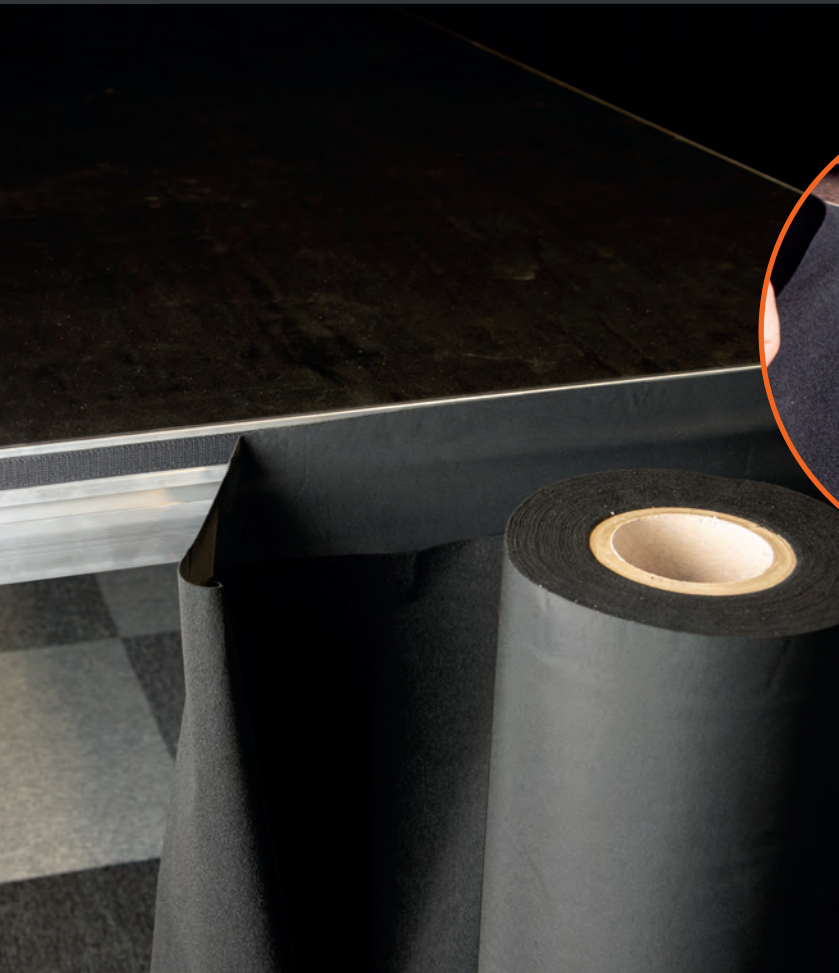


Made of Oekotex,  
GRS recycled cotton



# HOOK AND LOOP STAGE POLYESTER

Our Hook and loop stage polyester is a versatile, self-attaching polyester fabric that can be used to dress up your stage and hide any understructure that might be distracting. One side of this flame retardant fabric, the back, consists entirely of the loop side of velcro, whereas the front of the fabric is smooth and slightly shiny. Because the fabric is knitted, it can be cut to size without running the risk of fraying, and it can be reused several times without the loss of quality.



This skirting is available in black and comes in rolls of 25 meters. Various heights are available, ranging from 20 cm up to 100 cm.



Available  
colours



Flame retardant



Available heights  
20, 40, 60, 80 and 100 cm

# TRUSS COVERS

With our Truss covers, you can easily conceal all the cables surrounding your truss, giving your setup a neat appearance, or you can add a vibrant pop of colour. Adapting perfectly to the shape of your truss, these covers provide a sleek look to any triangle or square truss 30.

Our Truss covers are certified as flame retardant. Because the yarn itself has fire retardant properties, the fabric retains its protective qualities even after washing it, making these covers a reliable long-term solution for your setup. Available in three standard heights as well as in a 30 m option, which allows you to customise and cut the Truss covers to your desired length.



Available  
colours



Flame retardant  
even after washing



Available heights  
100, 200, 300 and 3000 cm



Made of 85% Polyester FR  
and 15% Elastane



Easy to customise by  
cutting them to length



# ACCESSORIES



## CARABINER CURTAIN RING

Perfect for backdrops! These sturdy carabiner rings are the perfect accessory whether you want to easily install your curtains or to create wave folds for a striking visual effect. The rings are made out of metal and they are equipped with a secure locking spring closure.



## HOOK AND LOOP TAPE

Available in two types: an adhesive hook and a non-adhesive loop fastener. The self-adhesive version sticks to smooth surfaces like aluminium or lacquered wood. The non-adhesive version can be sewn onto textiles or attached to wood and hard materials using staples.



## JACK THE GRIPPER

Easily roll out your Deco molton with Jack the Gripper! Simply insert the tool into the cardboard tube, lift it to clamp onto the roll and you're ready to unwind the molton along the stage.



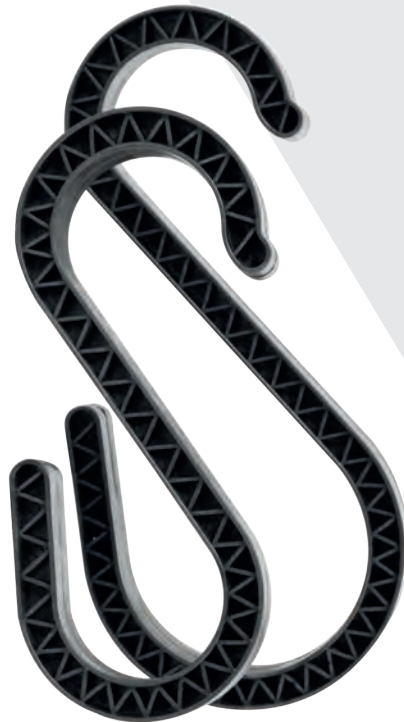
## DOUBLE-SIDED TAPE FOR DECO MOLTON

Use our double sided tape to quickly attach Deco molton to your stage decks.

# CABLES & CONNECTORS

10

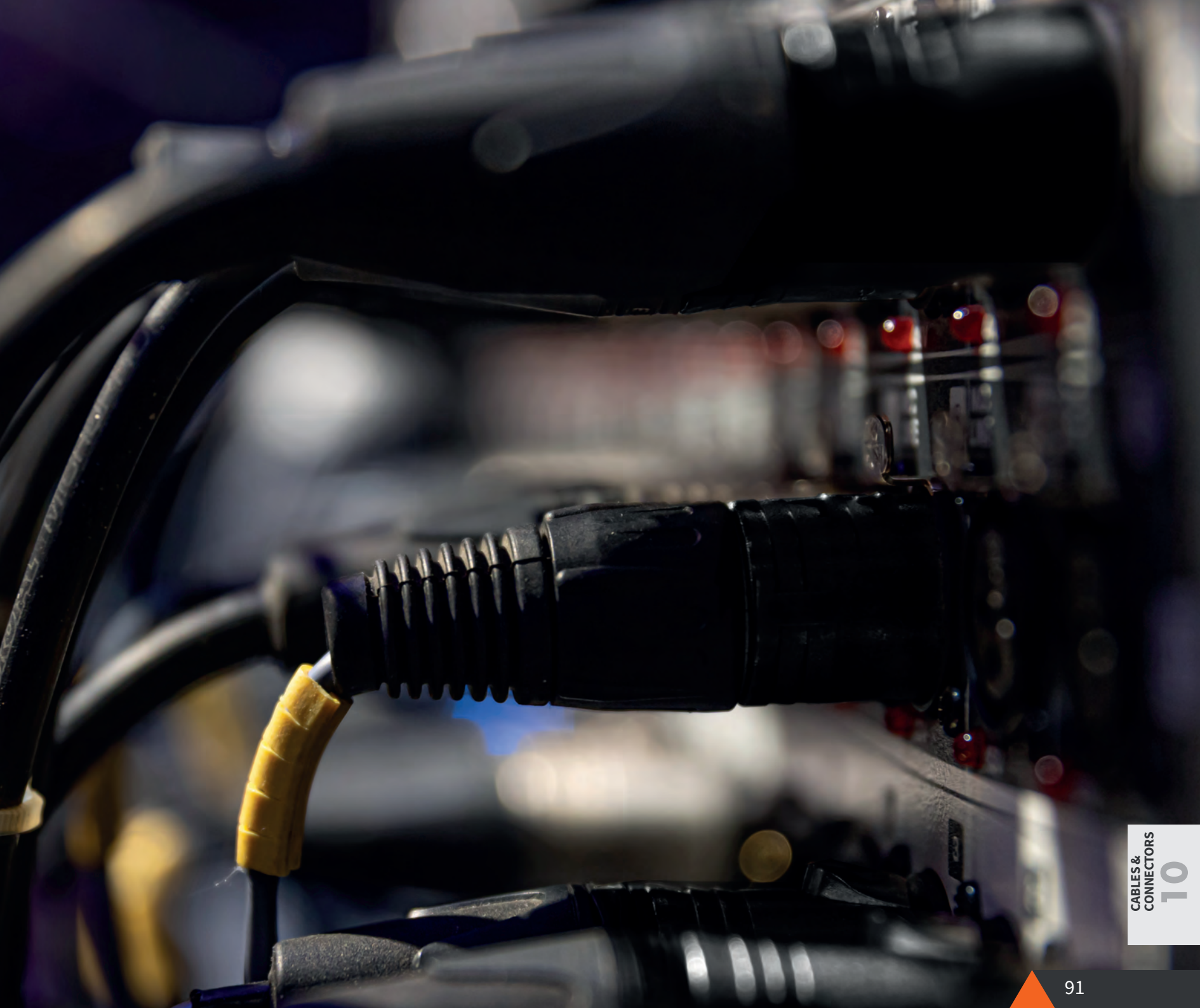
At Admiral Staging you can find a complete range of cables, connectors and cable management accessories. Our pre-assembled DMX cables are a cost-effective solution available in a variety of types and lengths. Our clever cable management solutions, such as the colourful cable wraps or T-fix rubber bands, help you manage your cables quickly and easily!



## 10 CABLES & CONNECTORS

DMX CABLES	92
CABLE PROTECTORS	94
CABLE WRAPS	95
CABLE HOOKS	96
T-FIX	97





# DMX CABLES

Whether you're lighting a stage, theatre or live concert, our 3-pin and 5-pin DMX cables can provide you with the strongest and most reliable DMX signal. The sturdy metal connectors allow the cables to be easily plugged in and unplugged while also ensuring a reliable connection. Thanks to the PVC jacket, the DMX cables can be quickly rolled up for easy storage between the shows.

## DMX Cables

Our good quality, cost-effective DMX cables come equipped with a shrink wrap sleeve for easy labeling and identification.



Lengths available 0.5, 1, 1.5, 2, 2.5, 3, 5, 10, 15 and 20 m

## XLR Chassis and Connectors

Assemble your own DMX cables in no time with our 3- and 5-pin chassis and connectors.



CONNECTORS



3 pins

5 pins

CHASSIS



3 pins

5 pins

## DMX adapter cable

Switch with ease from 3 to 5 pins and vice versa. Equipped with a coloured band for easy identification. The blue colour indicates 3 to 5 pin and the red colour indicates 5 to 3 pin.



CONNECTORS



3 pins

5 pins





# CABLE PROTECTORS

Get the vast amount of cables to your FOH on big events with the help of our Cable protectors. Designed for use in high traffic areas, these Cable protectors prevent your cables from being run over by people or vehicles while also protecting against trip hazards. Our range includes both solid rubber bridges as well as a Polyurethane (PU) version.



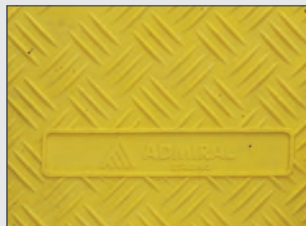
Sturdy construction



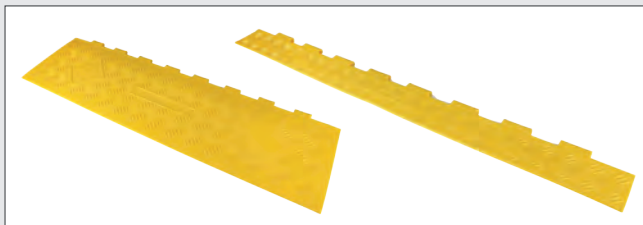
Easy to connect



Choose from 2 or 5 channels



Slip-resistant surface



Separate lids are also available





# CABLE WRAPS

The Admiral Cable wraps are a simple, efficient and versatile way to keep all of your cables neatly bundled together. Multiple colours are available, making it easier to colour-code.



Lengths available  
17, 26, 38 and 55 cm

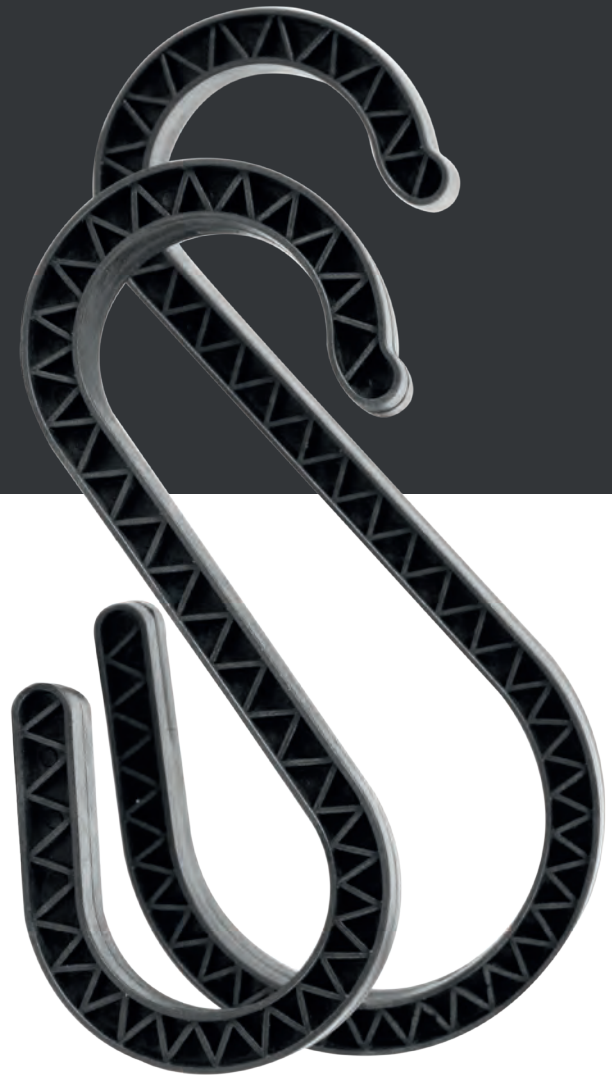


Available colours



# CABLE HOOKS

Running your cables alongside a tube or truss can also be done in no time with our Cable hooks. Taping or binding the cables becomes redundant, making these hooks a time saver.



15 kg



Flame retardant



2 sizes available  
a = 50 mm  
a = 80 mm



# T-FIX

Our T-fix is a strong, reusable rubber band that quickly fastens your cables to a truss or fly system. These rubber bands come with a hook for easy closure. T-fix binders are a sustainable and efficient cable management solution that can reduce both waste and costs compared to traditional options like PVC tape.



Location:  
Rae Gümnaasium - Rae, EE

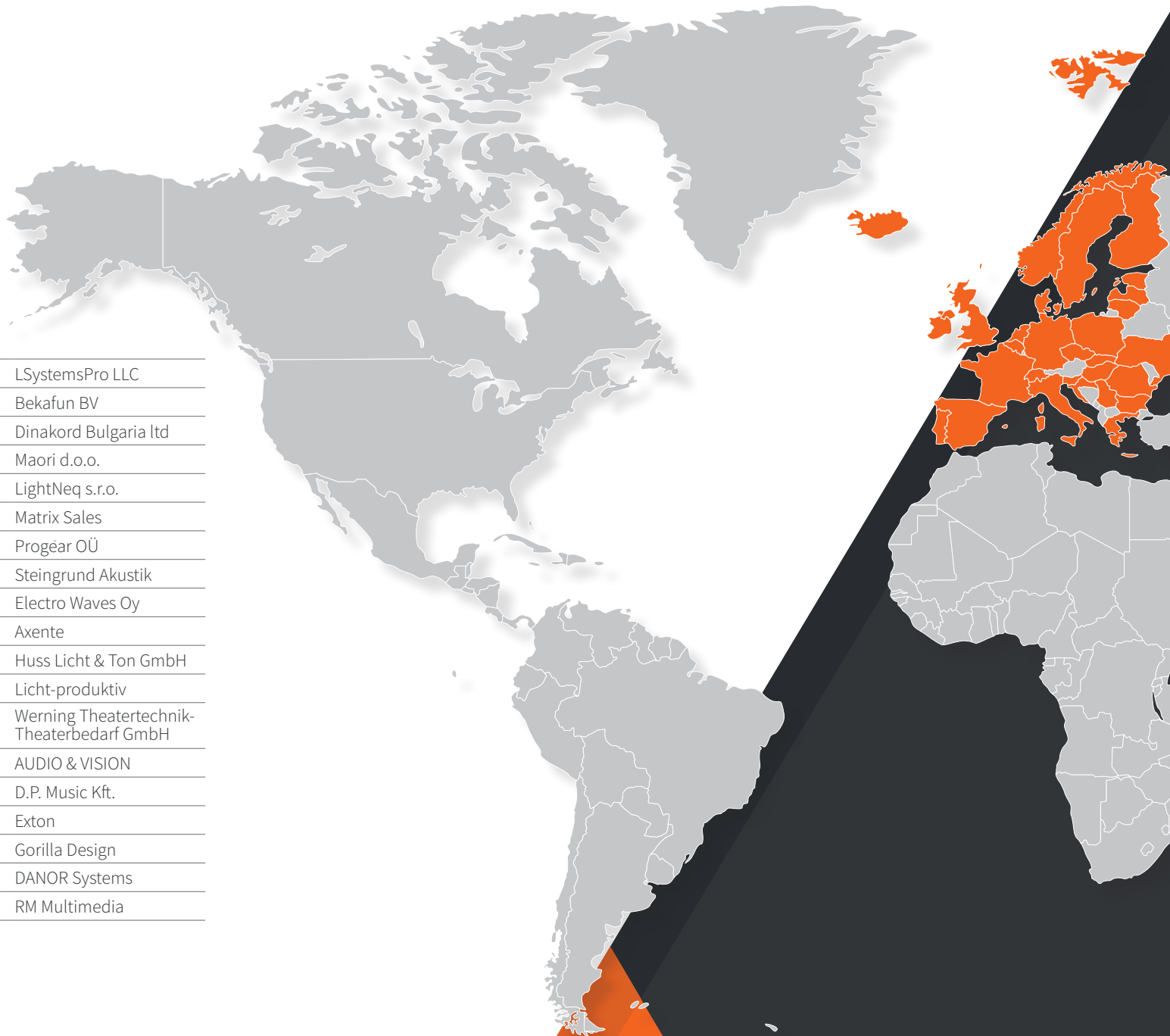


Lengths available  
4, 6, 8, 16 and 23 cm



scan the code to  
visit our website

	Armenia	LSystemsPro LLC
	Belgium	Bekafun BV
	Bulgaria	Dinakord Bulgaria Ltd
	Croatia	Maori d.o.o.
	Czechia	LightNeq s.r.o.
	Denmark	Matrix Sales
	Estonia	Progëar OÜ
	Faroe Islands	Steingrund Akustik
	Finland	Electro Waves Oy
	France	Axente
	Germany	Huss Licht & Ton GmbH
	Germany	Licht-produktiv
	Germany	Werning Theatertechnik-Theaterbedarf GmbH
	Greece	AUDIO & VISION
	Hungary	D.P. Music Kft.
	Iceland	Exton
	Ireland	Gorilla Design
	Israel	DANOR Systems
	Italy	RM Multimedia







	Latvia	Progear OÜ
	Lithuania	Progear OÜ
	Malta	Backlight Ltd
	Netherlands	Rolight Theatertechnik B.V.
	New Zealand	SHOWTECHNIX Limited
	Norway	Prostage AS
	Norway	MultiTechnic AS
	Poland	Prolight Sp. z o.o.
	Portugal	Luzeiro Lda
	Romania	Backstage Production Group
	Serbia	PSP Elektronik d.o.o.
	Slovakia	Showmedia
	Slovenia	Maori d.o.o.
	South Korea	Tongsuh Tech
	Spain	Pascualin Estructures Stage Technology SL
	Spain	Siluj iluminacion SL
	Spain	Stonex Show Lighting S.L.
	Sweden	Bellalite AB
	Switzerland	Limelight Distribution AG
	Ukraine	COMPLEX-V LLC
	United Arab Emirates	Provision AVL Gen Trading LLC
	United Kingdom	Stage Electrics

# OUR DISTRIBUTORS

# DIDN'T KNOW YOU NEEDED IT



**ADMIRAL**  
**STAGING**

---

Josink Kolkweg 10  
7545 PR Enschede  
Tel: +31 53 4 301 201  
[www.admiralstaging.com](http://www.admiralstaging.com)  
[info@admiralstaging.com](mailto:info@admiralstaging.com)

---